

Product datasheet for PH310825

IFNA5 (NM_002169) Human Mass Spec Standard

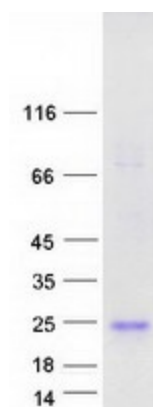
Product data:

Product Type:	Mass Spec Standards
Description:	IFNA5 MS Standard C13 and N15-labeled recombinant protein (NP_002160)
Species:	Human
Expression Host:	HEK293
Expression cDNA Clone or AA Sequence:	RC210825
Predicted MW:	21.9 kDa
Protein Sequence:	>RC210825 protein sequence Red=Cloning site Green=Tags(s) MALPFVLLMALVVLNCKSICSLGCDLPQTHSLSNRRTLMIMAQMGRISPFSCCLKDRHDFGFPQEEFDGNQ FQKAQAI SVLHEMIQQTFNLFSTKDSSATWDETL LDKFYTELYQQLNDLEACMMQEVGVEDTPLMNVDSI LTVRKYFQRITLYLTEKKYSPCAWEVVR AEIMRSFSLSANLQERLRRKE TRTRPLEQKLI SEEDLAANDILDYKDDDDKV
Tag:	C-Myc/DDK
Purity:	> 80% as determined by SDS-PAGE and Coomassie blue staining
Concentration:	>0.05 µg/µL as determined by microplate BCA method
Labeling Method:	Labeled with [U- ¹³ C ₆ , ¹⁵ N ₄]-L-Arginine and [U- ¹³ C ₆ , ¹⁵ N ₂]-L-Lysine
Buffer:	25 mM Tris-HCl, 100 mM glycine, pH 7.3
Storage:	Store at -80°C. Avoid repeated freeze-thaw cycles.
Stability:	Stable for 3 months from receipt of products under proper storage and handling conditions.
RefSeq:	NP_002160
RefSeq Size:	700
RefSeq ORF:	567
Synonyms:	IFN-alpha-5; IFN-alphaG; INA5; INFA5; IeIF G
Locus ID:	3442
UniProt ID:	P01569



[View online »](#)

Cytogenetics:	9p21.3
Summary:	Produced by macrophages, IFN-alpha have antiviral activities. Interferon stimulates the production of two enzymes: a protein kinase and an oligoadenylate synthetase. [UniProtKB/Swiss-Prot Function]
Protein Families:	Druggable Genome, Secreted Protein
Protein Pathways:	Antigen processing and presentation, Autoimmune thyroid disease, Cytokine-cytokine receptor interaction, Cytosolic DNA-sensing pathway, Jak-STAT signaling pathway, Natural killer cell mediated cytotoxicity, Regulation of autophagy, RIG-I-like receptor signaling pathway, Toll-like receptor signaling pathway

Product images:

Coomassie blue staining of purified IFNA5 protein (Cat# [TP310825]). The protein was produced from HEK293T cells transfected with IFNA5 cDNA clone (Cat# [RC210825]) using MegaTran 2.0 (Cat# [TT210002]).