

Product datasheet for PH310818

LIF (NM_002309) Human Mass Spec Standard

Product data:

| | |
|---------------------------------------|--|
| Product Type: | Mass Spec Standards |
| Description: | LIF MS Standard C13 and N15-labeled recombinant protein (NP_002300) |
| Species: | Human |
| Expression Host: | HEK293 |
| Expression cDNA Clone or AA Sequence: | RC210818 |
| Predicted MW: | 22 kDa |
| Protein Sequence: | >RC210818 protein sequence Red=Cloning site Green=Tags(s) MKVLAAGVVPLLLVLHWKHGAGSPLPITPVNATCAIRHPCHNNLMNQIRSQAQLNGSANALFILYYTAQ GEPFPNNLDKLCGPNVTDFFPPFHANGTEKAKLVELYRIVVYLGTSLGNITRDQKILNPSALSLSKLNAT ADILRGLLSNVLRCLSKYHVGHVDTYGPDTSGKDVQKKKLGQCQLLGKYKQIIAVLAQAF TRTRPLEQKLISEEDLAANDILDYKDDDDKV |
| Tag: | C-Myc/DDK |
| Purity: | > 80% as determined by SDS-PAGE and Coomassie blue staining |
| Concentration: | >0.05 µg/µL as determined by microplate BCA method |
| Labeling Method: | Labeled with [U- 13C6, 15N4]-L-Arginine and [U- 13C6, 15N2]-L-Lysine |
| Buffer: | 25 mM Tris-HCl, 100 mM glycine, pH 7.3 |
| Storage: | Store at -80°C. Avoid repeated freeze-thaw cycles. |
| Stability: | Stable for 3 months from receipt of products under proper storage and handling conditions. |
| RefSeq: | <u>NP_002300</u> |
| RefSeq Size: | 3987 |
| RefSeq ORF: | 606 |
| Synonyms: | CDF; DIA; HILDA; MLPLI |
| Locus ID: | 3976 |
| UniProt ID: | <u>P15018</u> |



[View online »](#)

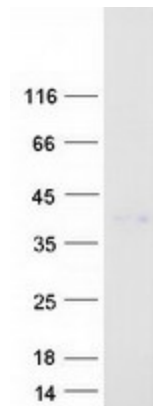
Cytogenetics: 22q12.2

Summary: The protein encoded by this gene is a pleiotropic cytokine with roles in several different systems. It is involved in the induction of hematopoietic differentiation in normal and myeloid leukemia cells, induction of neuronal cell differentiation, regulator of mesenchymal to epithelial conversion during kidney development, and may also have a role in immune tolerance at the maternal-fetal interface. Alternatively spliced transcript variants encoding multiple isoforms have been observed for this gene. [provided by RefSeq, Mar 2012]

Protein Families: Adult stem cells, Druggable Genome, ES Cell Differentiation/IPS, Secreted Protein

Protein Pathways: Cytokine-cytokine receptor interaction, Jak-STAT signaling pathway

Product images:



Coomassie blue staining of purified LIF protein (Cat# [TP310818]). The protein was produced from HEK293T cells transfected with LIF cDNA clone (Cat# [RC210818]) using MegaTran 2.0 (Cat# [TT210002]).