

## Product datasheet for PH310816

### PODXL (NM\_005397) Human Mass Spec Standard

#### Product data:

Product Type:	Mass Spec Standards
Description:	PODXL MS Standard C13 and N15-labeled recombinant protein (NP_005388)
Species:	Human
Expression Host:	HEK293
Expression cDNA Clone or AA Sequence:	RC210816
Predicted MW:	55.4 kDa
Protein Sequence:	>RC210816 protein sequence Red=Cloning site Green=Tags(s)

MRCALALSALLLLLSTPPLLSSSPSPSPSQNATQTTTDDSSNKTAPTPASSVTIMATDTAQQSTVPTSK  
ANEILASVKATTLGVSSDSPGTTTLAQVSGPVNTTVARGGGSGNPTTTIESPKSTKSADTTTATSTAT  
AKPNTTSSQNGAEDTTNSGGKSSHVTTDLTSTKAEHLTPHPTSPLSPRQPTSTHPVATPTSSGHDHLM  
KISSSSSTVAIPGYFTSPGMTTLPSSVISQRTQQTSSQMPASSTAPSSQETVQPTSPATALRTPTLPE  
TMSSSPTAASTTHRYPKTPSPTVAHESNWKACEDLETQTQSEKQLVLNLTGNTLCAGGASDEKLISLICR  
AVKATFNPAQDKCGIRLASVPGSQTVVVEKITIHTKLPKDVYERLKDKEAGVSDMKLGDQGPPE  
EAEDRFSMPLIITIVCMASFLLLVAALYGCHQRLSQRKDQQLTEELQTVENGYHDNPTLEVMETSSEM  
QEKKVVSLNGELGDSWIVPLDNLTKDDLDEEEDTHL

TRTRPLEQKLISEEDLAANDILDYKDDDDKV

Tag:	C-Myc/DDK
Purity:	> 80% as determined by SDS-PAGE and Coomassie blue staining
Concentration:	>0.05 µg/µL as determined by microplate BCA method
Labeling Method:	Labeled with [U- <sup>13</sup> C <sub>6</sub> , <sup>15</sup> N <sub>4</sub> ]-L-Arginine and [U- <sup>13</sup> C <sub>6</sub> , <sup>15</sup> N <sub>2</sub> ]-L-Lysine
Buffer:	25 mM Tris-HCl, 100 mM glycine, pH 7.3
Storage:	Store at -80°C. Avoid repeated freeze-thaw cycles.
Stability:	Stable for 3 months from receipt of products under proper storage and handling conditions.
RefSeq:	<a href="#">NP_005388</a>
RefSeq Size:	5911
RefSeq ORF:	1578



[View online »](#)

**Synonyms:** gp135; Gp200; PC; PCLP; PCLP-1; PDX; PODXL1

**Locus ID:** 5420

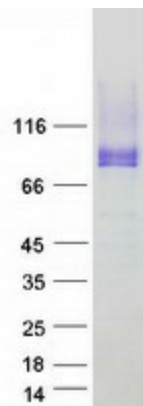
**UniProt ID:** [O00592](#), [Q96N83](#)

**Cytogenetics:** 7q32.3

**Summary:** This gene encodes a member of the sialomucin protein family. The encoded protein was originally identified as an important component of glomerular podocytes. Podocytes are highly differentiated epithelial cells with interdigitating foot processes covering the outer aspect of the glomerular basement membrane. Other biological activities of the encoded protein include: binding in a membrane protein complex with Na<sup>+</sup>/H<sup>+</sup> exchanger regulatory factor to intracellular cytoskeletal elements, playing a role in hematopoietic cell differentiation, and being expressed in vascular endothelium cells and binding to L-selectin. [provided by RefSeq, Jul 2008]

**Protein Families:** Transmembrane

### Product images:



Coomassie blue staining of purified PODXL protein (Cat# [TP310816]). The protein was produced from HEK293T cells transfected with PODXL cDNA clone (Cat# [RC210816]) using MegaTran 2.0 (Cat# [TT210002]).