

Product datasheet for PH310808

LILRA1 (NM_006863) Human Mass Spec Standard

Product data:

Product Type:	Mass Spec Standards
Description:	LILRA1 MS Standard C13 and N15-labeled recombinant protein (NP_006854)
Species:	Human
Expression Host:	HEK293
Expression cDNA Clone or AA Sequence:	RC210808
Predicted MW:	53.3 kDa
Protein Sequence:	>RC210808 protein sequence Red=Cloning site Green=Tags(s)

MTPIVTVLICLRSLGPRTHVQAGTLPKPTLWAEPGSVITQGSPVTLWCQGILETQEYRLYREKKTAPWI
TRIPQEIYKKGQFPFPSITWEHTGRYRCFYGSHTAGWSEPSDPLELVVTGAYIKPTLSALPSPVVTSGGN
VTLHCVSQVAFGSFILCKEGEDEHPQCLNSQPRTHGWSRAIFSVGPVSPSRRWSYRCYAYDSNSPHVWSL
PSDLLELLVVGSKKPSLSVQPGPIVAPGESLTLQCVSDVSYDRFVLYKEGERDFLQPGPQPQAGLSQA
NFTLGPVRSYGGQYRCSGAYNLSSEWSAPSDPLDILIAQQFRGRPFISVHPGPTVASGENVTLLCQSWG
PFHTFLLTKAGAADAPLRLRSIHEYPKYQAEFPMSPVTSAHSGTYRCYGSLSNPYLLSHPSDSLELMVS
GAAETLSPQNKSDSKAGAANTLSPSQNKTAHPQDYTVENLIRMGIAGLVVLVGLILLFEAQHSQRSL

TRTRPLEQKLISEEDLAANDILDYKDDDDKV

Tag:	C-Myc/DDK
Purity:	> 80% as determined by SDS-PAGE and Coomassie blue staining
Concentration:	>0.05 µg/µL as determined by microplate BCA method
Labeling Method:	Labeled with [U- ¹³ C ₆ , ¹⁵ N ₄]-L-Arginine and [U- ¹³ C ₆ , ¹⁵ N ₂]-L-Lysine
Buffer:	25 mM Tris-HCl, 100 mM glycine, pH 7.3
Storage:	Store at -80°C. Avoid repeated freeze-thaw cycles.
Stability:	Stable for 3 months from receipt of products under proper storage and handling conditions.
RefSeq:	<u>NP_006854</u>
RefSeq Size:	3288
RefSeq ORF:	1467
Synonyms:	CD85I; LIR-6; LIR6



[View online »](#)

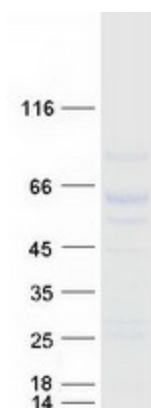
Locus ID: 11024

UniProt ID: [O75019](#)

Cytogenetics: 19q13.42

Summary: This gene encodes an activating member of the leukocyte immunoglobulin-like receptor (LIR) family, which is found in a gene cluster at chromosomal region 19q13.4. The encoded protein is predominantly expressed in B cells, interacts with major histocompatibility complex class I ligands, and contributes to the regulation of immune responses. Alternative splicing results in multiple transcript variants encoding different isoforms. [provided by RefSeq, May 2013]

Product images:



Coomassie blue staining of purified LILRA1 protein (Cat# [TP310808]). The protein was produced from HEK293T cells transfected with LILRA1 cDNA clone (Cat# [RC210808]) using MegaTran 2.0 (Cat# [TT210002]).