

## Product datasheet for PH310797

### Precerebellin (CBLN1) (NM\_004352) Human Mass Spec Standard

#### Product data:

Product Type:	Mass Spec Standards
Description:	CBLN1 MS Standard C13 and N15-labeled recombinant protein (NP_004343)
Species:	Human
Expression Host:	HEK293
Expression cDNA Clone or AA Sequence:	RC210797
Predicted MW:	21.1 kDa
Protein Sequence:	>RC210797 protein sequence Red=Cloning site Green=Tags(s)  MLGVLELLLLGAAWLAGPARGQNETEPIVLEGKCLVVCDSNPTSDPTGTALGISVRSKSAKVAFSAIRST NHEPSEMSNRMTIYFDQVLVNIIGNNFDSESTFIAPRKGIYSFNHVVVKVYNRQTIQVSLMLNGWPVIS AFAGDQDVTREAAASNGVLIQMEKGDRAYLKLERGNLMGGWKYSTFSGFLVFPL  TRTRPLEQKLI SEEDLAANDILDYKDDDDKV
Tag:	C-Myc/DDK
Purity:	> 80% as determined by SDS-PAGE and Coomassie blue staining
Concentration:	>0.05 µg/µL as determined by microplate BCA method
Labeling Method:	Labeled with [U- <sup>13</sup> C <sub>6</sub> , <sup>15</sup> N <sub>4</sub> ]-L-Arginine and [U- <sup>13</sup> C <sub>6</sub> , <sup>15</sup> N <sub>2</sub> ]-L-Lysine
Buffer:	25 mM Tris-HCl, 100 mM glycine, pH 7.3
Storage:	Store at -80°C. Avoid repeated freeze-thaw cycles.
Stability:	Stable for 3 months from receipt of products under proper storage and handling conditions.
RefSeq:	<a href="#">NP_004343</a>
RefSeq Size:	2435
RefSeq ORF:	579
Locus ID:	869
UniProt ID:	<a href="#">P23435</a>
Cytogenetics:	16q12.1



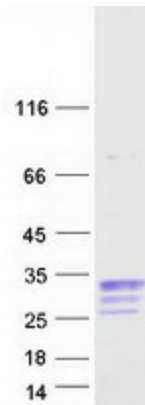
[View online »](#)

**Summary:**

This gene encodes a cerebellum-specific precursor protein, precerebellin, with similarity to the globular (non-collagen-like) domain of complement component C1qB. Precerebellin is processed to give rise to several derivatives, including the hexadecapeptide, cerebellin, which is highly enriched in postsynaptic structures of Purkinje cells. Cerebellin has also been found in human and rat adrenals, where it has been shown to enhance the secretory activity of this gland. [provided by RefSeq, Aug 2008]

**Protein Families:**

Secreted Protein

**Product images:**

Coomassie blue staining of purified CBLN1 protein (Cat# [TP310797]). The protein was produced from HEK293T cells transfected with CBLN1 cDNA clone (Cat# [RC210797]) using MegaTran 2.0 (Cat# [TT210002]).