

Product datasheet for PH310776

ENT2 (SLC29A2) (NM_001532) Human Mass Spec Standard

Product data:

Product Type:	Mass Spec Standards
Description:	SLC29A2 MS Standard C13 and N15-labeled recombinant protein (NP_001523)
Species:	Human
Expression Host:	HEK293
Expression cDNA Clone or AA Sequence:	RC210776
Predicted MW:	50.1 kDa
Protein Sequence:	>RC210776 protein sequence Red=Cloning site Green=Tags(s)

MARGDAPRDSYHLVGISFFILGLGTLTPWNFFITAIPYFQARLAGAGNSTARILSTNHTGPEDAFNFNW
VTLLSQLPLLLFTLLNSFLYQCVPETVRILGSLLAIIILLFALTAALVKVDMSPGPFSSITMASVCFINSF
SAVLQGSFLFGQLGTMPTSTYTLFLSGQGLAGIFAALAMLLSMASGVDAETSALGYFITPCVGILMSIVCY
LSLPHLKFARYYLANKSSQAQAQELETKAELLQSDENGIPSSPQKVALTLDLDLEKEPESEPEPQKPGK
PSVFTVFQKIWL TALCLVLVFTVTLVFPVPAITAMVTSSTSPGKWSQFFNPICCFLLFNIMDWLGRSLTSY
FLWPDEDSRLLPLLVLCLRFLVPLFMLCHVPQRSRLPILFPQDAYFITFMLLFAVSNGYLVSLTMCLAPR
QVLPHEREVAGALMTFFLALGLSCGASLSFLFKALL

TRTRPLEQKLI SEEDLAANDILDYKDDDDKV

Tag:	C-Myc/DDK
Purity:	> 80% as determined by SDS-PAGE and Coomassie blue staining
Concentration:	>0.05 µg/µL as determined by microplate BCA method
Labeling Method:	Labeled with [U- ¹³ C ₆ , ¹⁵ N ₄]-L-Arginine and [U- ¹³ C ₆ , ¹⁵ N ₂]-L-Lysine
Buffer:	25 mM Tris-HCl, 100 mM glycine, pH 7.3
Storage:	Store at -80°C. Avoid repeated freeze-thaw cycles.
Stability:	Stable for 3 months from receipt of products under proper storage and handling conditions.
RefSeq:	<u>NP_001523</u>
RefSeq Size:	2529
RefSeq ORF:	1368
Synonyms:	DER12; ENT2; HNP36



[View online »](#)

Locus ID: 3177

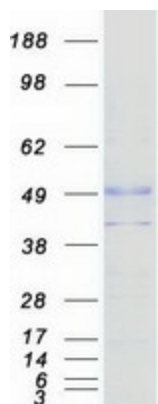
UniProt ID: [Q14542](#), [Q96FB2](#)

Cytogenetics: 11q13.2

Summary: The uptake of nucleosides by transporters, such as SLC29A2, is essential for nucleotide synthesis by salvage pathways in cells that lack de novo biosynthetic pathways. Nucleoside transport also plays a key role in the regulation of many physiologic processes through its effect on adenosine concentration at the cell surface (Griffiths et al., 1997 [PubMed 9396714]). [supplied by OMIM, Nov 2008]

Protein Families: Transmembrane

Product images:



Coomassie blue staining of purified SLC29A2 protein (Cat# [TP310776]). The protein was produced from HEK293T cells transfected with SLC29A2 cDNA clone (Cat# [RC210776]) using MegaTran 2.0 (Cat# [TT210002]).