

Product datasheet for PH310771

NDUFC1 (NM_002494) Human Mass Spec Standard

Product data:

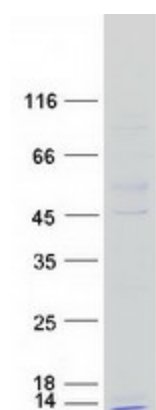
Product Type:	Mass Spec Standards
Description:	NDUFC1 MS Standard C13 and N15-labeled recombinant protein (NP_002485)
Species:	Human
Expression Host:	HEK293
Expression cDNA Clone or AA Sequence:	RC210771
Predicted MW:	8.7 kDa
Protein Sequence:	<p>>RC210771 protein sequence</p> <p>Red=Cloning site Green=Tags(s)</p> <p>MAPSALLRPLSRLLAPARLPSPSVRSKFYVREPPNAKPDWLKVGFTLGTTVFLWIYLIKQHNEDILEYKRRNGLE</p> <p>TRTRPLEQKLISEEDLAANDILDYKDDDDKV</p>
Tag:	C-Myc/DDK
Purity:	> 80% as determined by SDS-PAGE and Coomassie blue staining
Concentration:	>0.05 µg/µL as determined by microplate BCA method
Labeling Method:	Labeled with [U- 13C6, 15N4]-L-Arginine and [U- 13C6, 15N2]-L-Lysine
Buffer:	25 mM Tris-HCl, 100 mM glycine, pH 7.3
Storage:	Store at -80°C. Avoid repeated freeze-thaw cycles.
Stability:	Stable for 3 months from receipt of products under proper storage and handling conditions.
RefSeq:	NP_002485
RefSeq Size:	860
RefSeq ORF:	228
Synonyms:	KFYI
Locus ID:	4717
UniProt ID:	O43677
Cytogenetics:	4q31.1


[View online »](#)

Summary: The encoded protein is a subunit of the NADH:ubiquinone oxidoreductase (complex I), the first enzyme complex in the electron transport chain located in the inner mitochondrial membrane. Alternative splicing results in multiple transcript variants. [provided by RefSeq, May 2010]

Protein Pathways: Alzheimer's disease, Huntington's disease, Metabolic pathways, Oxidative phosphorylation, Parkinson's disease

Product images:



Coomassie blue staining of purified NDUFC1 protein (Cat# [TP310771]). The protein was produced from HEK293T cells transfected with NDUFC1 cDNA clone (Cat# [RC210771]) using MegaTran 2.0 (Cat# [TT210002]).