

Product datasheet for PH310761

CSTF3 (NM_001326) Human Mass Spec Standard

Product data:

Product Type:	Mass Spec Standards
Description:	CSTF3 MS Standard C13 and N15-labeled recombinant protein (NP_001317)
Species:	Human
Expression Host:	HEK293
Expression cDNA Clone or AA Sequence:	RC210761
Predicted MW:	82.9 kDa
Protein Sequence:	>RC210761 protein sequence Red =Cloning site Green =Tags(s)

MSGDGATEQAAEYVPEKVKKAEEKLEENPYDLDAWSILIREAQNPIDKARKTYERLVAQFPSSGRFWKL
YIEAEIKAKNYDKVEKLFQRCLMKVLHIDLWKCYL SYVRETKGKLP SYKEKMAQAYDFALDKIGMEIMSY
QIWVDYINFLKGVAVGSAENQRITAVRRVYQRCVNPINIEQLWRDYNKYEEGINIHLAKMIEDRS
RDYMNARRVAKEYETVMKGLDRNAPSVPQNTQPQEAQQVDMWKYIQWEKSNPLRTDQTLITKRVMFAY
EQCLLVLGHPDIWYEAQYLEQSSKLLAEKGMNNAKLFSDAANIYERAI STLLKKNMLLYFAYADYE
ESRMKYEKVHSIYNRLLAIEDIDPTLVYIQYMKFARRAEGIKSGRMIFKKAREDRTRHHVYVTAALMEY
YCSKDKSVAFKIFELGLKKGDIPEYVLAYIDYLSHLNEDNTRVLFERVL TSGSLPPEKSGE IWARFLA
FESNIGDLASILKVEKRRFTAFKEEYEGKETALLVDRYKFMDL YPCSASELKALGYKDVSRAKLA AIPD
PVVAPSIVPVLKDEVDRKPEYKPKPDTQQMIPFQPRHLAPPGLHPVPGGVFPVPPAAVVLMKLLPPPICFQ
GPFVQVDELMEIFRRCKIPNTVEEAVRIITGGAPELAVEGNPVESSNAVLTKAVKRPNEDSDEDEEKGAV
VPPVHDIYRARQQKRIR

TRTRPLEQKLISEEDLAANDILDYKDDDDKV

Tag:	C-Myc/DDK
Purity:	> 80% as determined by SDS-PAGE and Coomassie blue staining
Concentration:	>0.05 µg/µL as determined by microplate BCA method
Labeling Method:	Labeled with [U- 13C6, 15N4]-L-Arginine and [U- 13C6, 15N2]-L-Lysine
Buffer:	25 mM Tris-HCl, 100 mM glycine, pH 7.3
Storage:	Store at -80°C. Avoid repeated freeze-thaw cycles.
Stability:	Stable for 3 months from receipt of products under proper storage and handling conditions.
RefSeq:	<u>NP_001317</u>

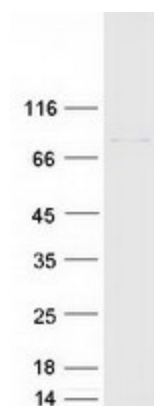


[View online »](#)

RefSeq Size:	2846
RefSeq ORF:	2151
Synonyms:	CSTF-77
Locus ID:	1479
UniProt ID:	Q12996
Cytogenetics:	11p13

Summary: The protein encoded by this gene is one of three (including CSTF1 and CSTF2) cleavage stimulation factors that combine to form the cleavage stimulation factor complex (CSTF). This complex is involved in the polyadenylation and 3' end cleavage of pre-mRNAs. The encoded protein functions as a homodimer and interacts directly with both CSTF1 and CSTF2 in the CSTF complex. Alternative splicing results in multiple transcript variants encoding different isoforms. [provided by RefSeq, Jul 2008]

Product images:



Coomassie blue staining of purified CSTF3 protein (Cat# [TP310761]). The protein was produced from HEK293T cells transfected with CSTF3 cDNA clone (Cat# [RC210761]) using MegaTran 2.0 (Cat# [TT210002]).