

Product datasheet for PH310758

CSK (NM_004383) Human Mass Spec Standard

Product data:

Product Type:	Mass Spec Standards
Description:	CSK MS Standard C13 and N15-labeled recombinant protein (NP_004374)
Species:	Human
Expression Host:	HEK293
Expression cDNA Clone or AA Sequence:	RC210758
Predicted MW:	50.7 kDa
Protein Sequence:	>RC210758 protein sequence Red=Cloning site Green=Tags(s)
	MSAIQAAWPSGTECIAKYNFHGTAEQDLPFCKGDVLTIVAVTKDPNWKAKNKVGREGIIPANYVQKREG VKAGTKLSLMPWFHGKITREQAERLLYPPETGLFLVRESTNYPGDYTLVCVSCDGKVEHYRIMYHASKLSI DEEVYFENLMQLVEHYTSDADGLCTRLIKPKVMEGTVAQAQDEFYRSGWALNMKELKLLQTIGKGEFGDVM LGDYRGNKVAVKCIKNDATAQAFLAEASVMTQLRHSNLVQLLGVIVEEKGGLYIVTEYMAKGSLVDYLR RGRSVLGGDCLLKFSLDVCEAMEYLEGNNFVHRDLAARNVLVSEDNVAKVSDFGLTKEASSTQDTGKLPV KWTAPEALREKKFSTKSDVWSFGILLWEIYSFGRVPYPRIPDKDVPVPRVEKGYKMDAPDGCPPAVYEV NCWHLDAAMRPSFLQLREQLHEIKTHELHL
	TRTRPLEQKLISEEDLAANDILDYKDDDDKV
Tag:	C-Myc/DDK
Purity:	> 80% as determined by SDS-PAGE and Coomassie blue staining
Concentration:	>0.05 µg/µL as determined by microplate BCA method
Labeling Method:	Labeled with [U- 13C6, 15N4]-L-Arginine and [U- 13C6, 15N2]-L-Lysine
Buffer:	25 mM Tris-HCl, 100 mM glycine, pH 7.3
Storage:	Store at -80°C. Avoid repeated freeze-thaw cycles.
Stability:	Stable for 3 months from receipt of products under proper storage and handling conditions.
RefSeq:	<u>NP_004374</u>
RefSeq Size:	2755
RefSeq ORF:	1350
Locus ID:	1445



[View online »](#)

UniProt ID: [P41240](#), [B2R6Q4](#)

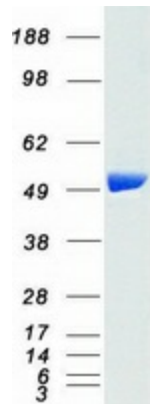
Cytogenetics: 15q24.1

Summary: The protein encoded by this gene is involved in multiple pathways, including the regulation of Src family kinases. It plays an important role in T-cell activation through its association with the protein encoded by the protein tyrosine phosphatase, non-receptor type 22 (PTPN22) gene. This protein also phosphorylates C-terminal tyrosine residues on multiple substrates, including the protein encoded by the SRC proto-oncogene, non-receptor tyrosine kinase gene. Phosphorylation suppresses the kinase activity of the Src family tyrosine kinases. An intronic polymorphism (rs34933034) in this gene has been found to affect B-cell activation and is associated with systemic lupus erythematosus (SLE). Alternative splicing results in multiple transcript variants. [provided by RefSeq, Aug 2017]

Protein Families: Druggable Genome, Protein Kinase

Protein Pathways: Chemokine signaling pathway, Epithelial cell signaling in Helicobacter pylori infection, Neurotrophin signaling pathway, Regulation of actin cytoskeleton

Product images:



Coomassie blue staining of purified CSK protein (Cat# [TP310758]). The protein was produced from HEK293T cells transfected with CSK cDNA clone (Cat# [RC210758]) using MegaTran 2.0 (Cat# [TT210002]).