

Product datasheet for PH310752

Tartrate Resistant Acid Phosphatase (ACP5) (NM_001611) Human Mass Spec Standard

Product data:

Product Type:	Mass Spec Standards
Description:	ACP5 MS Standard C13 and N15-labeled recombinant protein (NP_001602)
Species:	Human
Expression Host:	HEK293
Expression cDNA Clone or AA Sequence:	RC210752
Predicted MW:	36.6 kDa
Protein Sequence:	>RC210752 protein sequence Red=Cloning site Green=Tags(s) MDMWTALLILQALLPLSLADGATPALRFVAVGDWGGVNPAPFHTAREMANAKEIARTVQILGADFILSLG DNFYFTGVQDINDKRFQETFEDVFSRSLRKPVPWYVLAGNHDHLGNVSAQIAYSKI SKRWNFSPFYRLH FKIPQTNVSVAIFMLDTVTL CGNSDDFLSQQPERPRDVKLARTQLSWLKKQLAAAREDYVLVAGHYPVWS IAEHGPTHCLVKQLRPLLATYGVTA YLCGHDHNLQYLQDENGVGYVLSGAGNFM DPSKRHRKVPNGYLR FHYGTEDSLGGFAYVEISSKEMTVTYIEASGKSLFKTRLPRRARP TRTRPLEQKLI SEEDLAANDILDYKDDDDKV
Tag:	C-Myc/DDK
Purity:	> 80% as determined by SDS-PAGE and Coomassie blue staining
Concentration:	>0.05 µg/µL as determined by microplate BCA method
Labeling Method:	Labeled with [U- ¹³ C ₆ , ¹⁵ N ₄]-L-Arginine and [U- ¹³ C ₆ , ¹⁵ N ₂]-L-Lysine
Buffer:	25 mM Tris-HCl, 100 mM glycine, pH 7.3
Storage:	Store at -80°C. Avoid repeated freeze-thaw cycles.
Stability:	Stable for 3 months from receipt of products under proper storage and handling conditions.
RefSeq:	<u>NP_001602</u>
RefSeq Size:	1506
RefSeq ORF:	975
Synonyms:	HPAP; TRACP5a; TRACP5b; TRAP; TrATPase
Locus ID:	54



[View online »](#)

UniProt ID: [P13686](#), [A0A024R7F8](#)

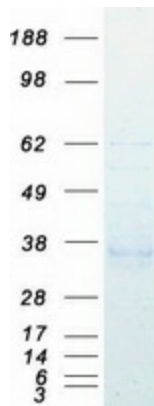
Cytogenetics: 19p13.2

Summary: This gene encodes an iron containing glycoprotein which catalyzes the conversion of orthophosphoric monoester to alcohol and orthophosphate. It is the most basic of the acid phosphatases and is the only form not inhibited by L(+)-tartrate. [provided by RefSeq, Aug 2008]

Protein Families: Druggable Genome

Protein Pathways: Lysosome, Riboflavin metabolism

Product images:



Coomassie blue staining of purified ACP5 protein (Cat# [TP310752]). The protein was produced from HEK293T cells transfected with ACP5 cDNA clone (Cat# [RC210752]) using MegaTran 2.0 (Cat# [TT210002]).