

Product datasheet for PH310749

MAPRE1 (NM_012325) Human Mass Spec Standard

Product data:

Product Type:	Mass Spec Standards
Description:	MAPRE1 MS Standard C13 and N15-labeled recombinant protein (NP_036457)
Species:	Human
Expression Host:	HEK293
Expression cDNA Clone or AA Sequence:	RC210749
Predicted MW:	30 kDa
Protein Sequence:	>RC210749 protein sequence Red=Cloning site Green=Tags(s)
	MAVNVYSTSVTSDNLSRHDMLAWINESLQLNLTKIEQLCSGAAYCQFMDMLFPGSIALKKVKFQAKLEHE YIQNFKILQAGFKRMGVDKIIPVDKLVKGFQDNFEFVQWFKKFFDANYDGKDYDPVAARQGQETAVAPS LVAPALNPKPKPLTSSSAAPQRPISQRTAAAPKAGPGVVRKNPGVNGDDEAAELMQQVNVLKLTVEDL EKERDFYFGKLRNIELICQENEGENDPVLQRIVDILYATDEGFVIPDEGGPQEEQEEY
	TRTRPLEQKLISEEDLAANDILDYKDDDDKV
Tag:	C-Myc/DDK
Purity:	> 80% as determined by SDS-PAGE and Coomassie blue staining
Concentration:	>0.05 µg/µL as determined by microplate BCA method
Labeling Method:	Labeled with [U- ¹³ C ₆ , ¹⁵ N ₄]-L-Arginine and [U- ¹³ C ₆ , ¹⁵ N ₂]-L-Lysine
Buffer:	25 mM Tris-HCl, 100 mM glycine, pH 7.3
Storage:	Store at -80°C. Avoid repeated freeze-thaw cycles.
Stability:	Stable for 3 months from receipt of products under proper storage and handling conditions.
RefSeq:	NP_036457
RefSeq Size:	2640
RefSeq ORF:	804
Synonyms:	EB1
Locus ID:	22919
UniProt ID:	Q15691



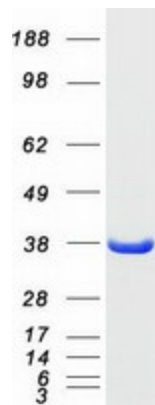
[View online »](#)

Cytogenetics: 20q11.21

Summary: The protein encoded by this gene was first identified by its binding to the APC protein which is often mutated in familial and sporadic forms of colorectal cancer. This protein localizes to microtubules, especially the growing ends, in interphase cells. During mitosis, the protein is associated with the centrosomes and spindle microtubules. The protein also associates with components of the dynactin complex and the intermediate chain of cytoplasmic dynein. Because of these associations, it is thought that this protein is involved in the regulation of microtubule structures and chromosome stability. This gene is a member of the RP/EB family. [provided by RefSeq, Jul 2008]

Protein Families: Druggable Genome

Product images:



Coomassie blue staining of purified MAPRE1 protein (Cat# [TP310749]). The protein was produced from HEK293T cells transfected with MAPRE1 cDNA clone (Cat# [RC210749]) using MegaTran 2.0 (Cat# [TT210002]).