

Product datasheet for PH310746

TOMM20 (NM_014765) Human Mass Spec Standard

Product data:

Product Type:	Mass Spec Standards
Description:	TOMM20 MS Standard C13 and N15-labeled recombinant protein (NP_055580)
Species:	Human
Expression Host:	HEK293
Expression cDNA Clone or AA Sequence:	RC210746
Predicted MW:	16.3 kDa
Protein Sequence:	>RC210746 protein sequence Red=Cloning site Green=Tags(s) MVGRNSAIAAGVCGALFIGYCIYFDRKRRSDPNFKNRLRERRKKQKLAKERAGLSKLPDLKDAEAVQKFF LEEIQLGEELLAQGEYEKGV DHLTNAIAVCGQPQQLLQVLQQTLP PPVFQMLLTKLPTISQRIVSAQSLA EDDVE TRTRPLEQKLI SEEDLAANDILDYKDDDDKV
Tag:	C-Myc/DDK
Purity:	> 80% as determined by SDS-PAGE and Coomassie blue staining
Concentration:	>0.05 µg/µL as determined by microplate BCA method
Labeling Method:	Labeled with [U- ¹³ C ₆ , ¹⁵ N ₄]-L-Arginine and [U- ¹³ C ₆ , ¹⁵ N ₂]-L-Lysine
Buffer:	25 mM Tris-HCl, 100 mM glycine, pH 7.3
Storage:	Store at -80°C. Avoid repeated freeze-thaw cycles.
Stability:	Stable for 3 months from receipt of products under proper storage and handling conditions.
RefSeq:	NP_055580
RefSeq Size:	3407
RefSeq ORF:	435
Synonyms:	MAS20; MOM19; TOM20
Locus ID:	9804
UniProt ID:	Q15388 , A0A024R3W2



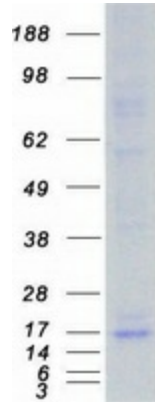
[View online »](#)

Cytogenetics: 1q42.3

Summary: Central component of the receptor complex responsible for the recognition and translocation of cytosolically synthesized mitochondrial preproteins. Together with TOM22 functions as the transit peptide receptor at the surface of the mitochondrion outer membrane and facilitates the movement of preproteins into the TOM40 translocation pore (By similarity). Required for the translocation across the mitochondrial outer membrane of cytochrome P450 monooxygenases.[UniProtKB/Swiss-Prot Function]

Protein Families: Druggable Genome, Transmembrane

Product images:



Coomassie blue staining of purified TOMM20 protein (Cat# [TP310746]). The protein was produced from HEK293T cells transfected with TOMM20 cDNA clone (Cat# [RC210746]) using MegaTran 2.0 (Cat# [TT210002]).