

Product datasheet for PH310744

SMU1 (NM_018225) Human Mass Spec Standard

Product data:

Product Type:	Mass Spec Standards
Description:	SMU1 MS Standard C13 and N15-labeled recombinant protein (NP_060695)
Species:	Human
Expression Host:	HEK293
Expression cDNA Clone or AA Sequence:	RC210744
Predicted MW:	57.6 kDa
Protein Sequence:	>RC210744 protein sequence Red=Cloning site Green=Tags(s)

MSIEIESSDVIRLIMQYLKENS LHRALATLQEETT VSLNTVDSIESFVADINSGHWDTVLQVIQSLKLPD
KTLIDL YEQV VLELIELRELGAARSLLRQTDPMIMLKQTQPERYIHLENLLARSYFDPREAYPDGSSKEK
RRAAIAQALAGEVSVVPPSRLMALLGQALKWQQHQGLLPPGMTIDLFRGKAAVKDVEEEKFPTQLSRHIK
FGQKSHVECARFSPDGQYLVTGSVDGFIEVWNFTTGKIRKDLKYAQDNFMMDDAVLCMCFSRDTEMLA
TGAQDGKIKVWKIQSGQCLRRFERAHSKGVTCLSFSKSSQILSASFDTIRIHGLKSGKTLKEFRGHSS
FVNEATFTQDGHYIISASSDGTVKIWNMKTTECSNTFKSLGSTAGTDITVNSVILLPKNPEHFVVCNRSN
TVVIMNMQGQIVRSFSSGKREGGDFVCCALSPRGEWIYCVGEDFVLYCFSTVTGKLERLTVHEKDVIGI
AHHPHQNL IATYSEDALLKWKP

TRTRPLEQKLI SEEDLAANDILDYKDDDDKV

Tag:	C-Myc/DDK
Purity:	> 80% as determined by SDS-PAGE and Coomassie blue staining
Concentration:	>0.05 µg/µL as determined by microplate BCA method
Labeling Method:	Labeled with [U- 13C6, 15N4]-L-Arginine and [U- 13C6, 15N2]-L-Lysine
Buffer:	25 mM Tris-HCl, 100 mM glycine, pH 7.3
Storage:	Store at -80°C. Avoid repeated freeze-thaw cycles.
Stability:	Stable for 3 months from receipt of products under proper storage and handling conditions.
RefSeq:	NP_060695
RefSeq Size:	7091
RefSeq ORF:	1539



[View online »](#)

Synonyms: BWD; fSAP57; SMU-1

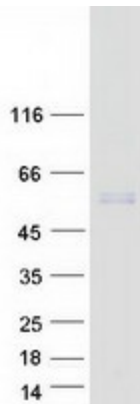
Locus ID: 55234

UniProt ID: [Q2TAY7](#), [A0MNN4](#)

Cytogenetics: 9p21.1

Summary: Involved in pre-mRNA splicing as a component of the spliceosome (PubMed:28781166). Regulates alternative splicing of the HSPG2 pre-mRNA (By similarity). Required for normal accumulation of IK (PubMed:24945353). Required for normal mitotic spindle assembly and normal progress through mitosis (By similarity).[UniProtKB/Swiss-Prot Function]

Product images:



Coomassie blue staining of purified SMU1 protein (Cat# [TP310744]). The protein was produced from HEK293T cells transfected with SMU1 cDNA clone (Cat# [RC210744]) using MegaTran 2.0 (Cat# [TT210002]).