

## Product datasheet for PH310729

### SERP1 (NM\_014445) Human Mass Spec Standard

#### Product data:

Product Type:	Mass Spec Standards
Description:	SERP1 MS Standard C13 and N15-labeled recombinant protein (NP_055260)
Species:	Human
Expression Host:	HEK293
Expression cDNA Clone or AA Sequence:	RC210729
Predicted MW:	7.4 kDa
Protein Sequence:	>RC210729 protein sequence Red=Cloning site Green=Tags(s)  MVAKQRIRMANEKHSKNITQRGNVAKTSRNASPEEKASVGPWLLALFIFVVCGSAIFQIIQSIRMG  TRTRPLEQKLISEEDLAANDILDYKDDDDKV
Tag:	C-Myc/DDK
Purity:	> 80% as determined by SDS-PAGE and Coomassie blue staining
Concentration:	>0.05 µg/µL as determined by microplate BCA method
Labeling Method:	Labeled with [U- 13C6, 15N4]-L-Arginine and [U- 13C6, 15N2]-L-Lysine
Buffer:	25 mM Tris-HCl, 100 mM glycine, pH 7.3
Storage:	Store at -80°C. Avoid repeated freeze-thaw cycles.
Stability:	Stable for 3 months from receipt of products under proper storage and handling conditions.
RefSeq:	<a href="#">NP_055260</a>
RefSeq Size:	3181
RefSeq ORF:	198
Synonyms:	RAMP4
Locus ID:	27230
UniProt ID:	<a href="#">Q9Y6X1</a>
Cytogenetics:	3q25.1

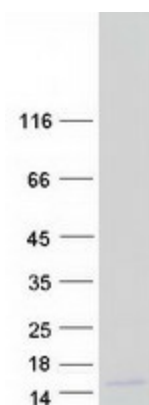


[View online »](#)

**Summary:** Interacts with target proteins during their translocation into the lumen of the endoplasmic reticulum. Protects unfolded target proteins against degradation during ER stress. May facilitate glycosylation of target proteins after termination of ER stress. May modulate the use of N-glycosylation sites on target proteins (By similarity).[UniProtKB/Swiss-Prot Function]

**Protein Families:** Transmembrane

**Product images:**



Coomassie blue staining of purified SERP1 protein (Cat# [TP310729]). The protein was produced from HEK293T cells transfected with SERP1 cDNA clone (Cat# [RC210729]) using MegaTran 2.0 (Cat# [TT210002]).