

Product datasheet for PH310724

RFTN2 (NM_144629) Human Mass Spec Standard

Product data:

Product Type:	Mass Spec Standards
Description:	RFTN2 MS Standard C13 and N15-labeled recombinant protein (NP_653230)
Species:	Human
Expression Host:	HEK293
Expression cDNA Clone or AA Sequence:	RC210724
Predicted MW:	55.9 kDa
Protein Sequence:	>RC210724 protein sequence Red=Cloning site Green=Tags(s)

MGCGLRKLDDPDDSSPGKIFSTLKRQVETKTEFAYEYVLLDFTLQASSNPEVIKINSILDIVTKVENYY
LKGIVGAIHPVIQPVGQRKHLPASYL YRVVLLRLKLSPKNSAAPSGQRRPRLVIEECPLTSEAQTNDAA
KELIEKINVAARKGMKVFVGFISQHYSPSKFCNGTNHDGDIESMLHVRHGSDENCRSWNEGTL SGQSSSEG
IEEELHHESGYQMEQNGSPTSSKSRKGEASDNKLYTVFNAFDDDDSTSWAYQEGILSMKVTRKGSVISTL
DADWLEL TTFYKQGLSLIDSFVFWETSKGEHLPKSLEGGFFIYEEEGSGVPGSSRKGNDAIVVEQWTVIE
GCEIKTDYGPLLHTLAIEFGWLLTSVLPVLRHDSEGNLTKQIVFLQRPVMMNSAAQTPDKKASRHIK
EDKNKATSRSIGLDTTSSQPAESRHLPEECRLSPSRECWTKEGRLAQHNSFSGFSSSDNVLRELDGQFD
QEDGVTQVTCM

TRTRPLEQKLI SEEDLAANDILDYKDDDDKV

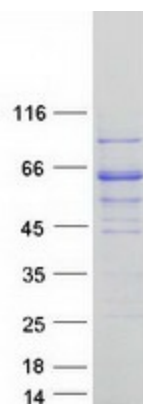
Tag:	C-Myc/DDK
Purity:	> 80% as determined by SDS-PAGE and Coomassie blue staining
Concentration:	>0.05 µg/µL as determined by microplate BCA method
Labeling Method:	Labeled with [U- 13C6, 15N4]-L-Arginine and [U- 13C6, 15N2]-L-Lysine
Buffer:	25 mM Tris-HCl, 100 mM glycine, pH 7.3
Storage:	Store at -80°C. Avoid repeated freeze-thaw cycles.
Stability:	Stable for 3 months from receipt of products under proper storage and handling conditions.
RefSeq:	NP_653230
RefSeq Size:	3131
RefSeq ORF:	1503



[View online »](#)

Synonyms:	C2orf11; Raftlin-2
Locus ID:	130132
UniProt ID:	Q52LD8
Cytogenetics:	2q33.1
Summary:	Upon bacterial lipopolysaccharide stimulation, mediates clathrin-dependent internalization of TLR4 in dendritic cells, resulting in activation of TICAM1-mediated signaling and subsequent IFNB1 production. May regulate B-cell antigen receptor-mediated signaling.[UniProtKB/Swiss-Prot Function]

Product images:



Coomassie blue staining of purified RFTN2 protein (Cat# [TP310724]). The protein was produced from HEK293T cells transfected with RFTN2 cDNA clone (Cat# [RC210724]) using MegaTran 2.0 (Cat# [TT210002]).