

Product datasheet for PH310717

Proteasome 20S alpha 5 (PSMA5) (NM_002790) Human Mass Spec Standard

Product data:

Product Type:	Mass Spec Standards
Description:	PSMA5 MS Standard C13 and N15-labeled recombinant protein (NP_002781)
Species:	Human
Expression Host:	HEK293
Expression cDNA Clone or AA Sequence:	RC210717
Predicted MW:	26.2 kDa
Protein Sequence:	>RC210717 representing NM_002790 Red =Cloning site Green =Tags(s) MFLTRSEYDRGVNTFSPEGRLFQVEYAIEAIKLGSTAIGIQTSEGVCLAVEKRITSPLMEPSSIEKIVEI DAHIGCAMSLIADAKTLIDKARVETQNHWFYNETMTVESVTQAVSNLALQFG EEDADPGAMSRPFGVA LLFGGVDEKGPQLFHMDPSGTFVQCDARAIGSASEGAQSSLQEVYHKSMTLKEAIKSSLIILKQVMEEKL NATNIELATVQPGQNFHMFTKEELEEVIKDI TR TRPLEQKLI SEEDLAANDILDYKDDDDKV
Tag:	C-Myc/DDK
Purity:	> 80% as determined by SDS-PAGE and Coomassie blue staining
Concentration:	>0.05 µg/µL as determined by microplate BCA method
Labeling Method:	Labeled with [U- ¹³ C ₆ , ¹⁵ N ₄]-L-Arginine and [U- ¹³ C ₆ , ¹⁵ N ₂]-L-Lysine
Buffer:	25 mM Tris-HCl, 100 mM glycine, pH 7.3
Storage:	Store at -80°C. Avoid repeated freeze-thaw cycles.
Stability:	Stable for 3 months from receipt of products under proper storage and handling conditions.
RefSeq:	NP_002781
RefSeq Size:	1023
RefSeq ORF:	723
Synonyms:	PSC5; ZETA
Locus ID:	5686
UniProt ID:	P28066 , A0A109NGN6



[View online »](#)

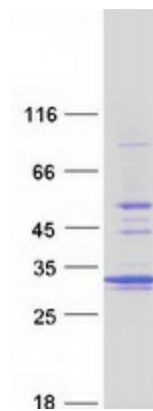
Cytogenetics: 1p13.3

Summary: The proteasome is a multicatalytic proteinase complex with a highly ordered ring-shaped 20S core structure. The core structure is composed of 4 rings of 28 non-identical subunits; 2 rings are composed of 7 alpha subunits and 2 rings are composed of 7 beta subunits. Proteasomes are distributed throughout eukaryotic cells at a high concentration and cleave peptides in an ATP/ubiquitin-dependent process in a non-lysosomal pathway. An essential function of a modified proteasome, the immunoproteasome, is the processing of class I MHC peptides. This gene encodes a member of the peptidase T1A family, that is a 20S core alpha subunit. Multiple alternatively spliced transcript variants encoding two distinct isoforms have been found for this gene. [provided by RefSeq, Dec 2010]

Protein Families: Druggable Genome, Protease

Protein Pathways: Proteasome

Product images:



Coomassie blue staining of purified PSMA5 protein (Cat# [TP310717]). The protein was produced from HEK293T cells transfected with PSMA5 cDNA clone (Cat# [RC210717]) using MegaTran 2.0 (Cat# [TT210002]).