

## Product datasheet for PH310681

### PRH2 (NM\_005042) Human Mass Spec Standard

#### Product data:

Product Type:	Mass Spec Standards
Description:	PRH2 MS Standard C13 and N15-labeled recombinant protein (NP_005033)
Species:	Human
Expression Host:	HEK293
Expression cDNA Clone or AA Sequence:	RC210681
Predicted MW:	17 kDa
Protein Sequence:	>RC210681 protein sequence Red=Cloning site Green=Tags(s)  MLLILLSVALLAFSSAQDLDEDVSQEDVPLVISDGGDSEQFIDEERQGPPLGGQQSQPSAGDGNQDDGPQ QGPPQGGGQQQGPPPPQGKPKQGGHPPPPQGRPQGGHPRPPRGRPPQGGHQQGPPPP PPPGKPKGPPPPQGGRPQGGPQGGSPQ  TRTRPLEQKLI SEEDLAANDILDYKDDDDKV
Tag:	C-Myc/DDK
Purity:	> 80% as determined by SDS-PAGE and Coomassie blue staining
Concentration:	>0.05 µg/µL as determined by microplate BCA method
Labeling Method:	Labeled with [U- 13C6, 15N4]-L-Arginine and [U- 13C6, 15N2]-L-Lysine
Buffer:	25 mM Tris-HCl, 100 mM glycine, pH 7.3
Storage:	Store at -80°C. Avoid repeated freeze-thaw cycles.
Stability:	Stable for 3 months from receipt of products under proper storage and handling conditions.
RefSeq:	<u>NP_005033</u>
RefSeq Size:	4323
RefSeq ORF:	498
Synonyms:	db-s; pa; PIF-S; Pr; pr1/Pr2; PRH1; PRP-1/PRP-2
Locus ID:	5555
UniProt ID:	<u>P02810</u>



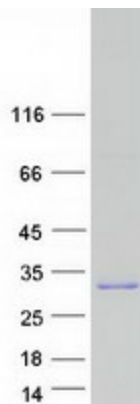
[View online »](#)

**Cytogenetics:** 12p13.2

**Summary:** This gene encodes a member of the heterogeneous family of proline-rich salivary glycoproteins. The encoded preproprotein undergoes proteolytic processing to generate one or more mature isoforms before secretion from the parotid and submandibular/sublingual glands. In western population this locus is commonly biallelic and encodes proline-rich protein (PRP) isoforms, PRP-1 and PRP-2. The reference genome encodes the PRP-1 allele. Certain alleles of this gene are associated with susceptibility to dental caries. This gene is located in a cluster of closely related salivary proline-rich proteins on chromosome 12. [provided by RefSeq, Oct 2015]

**Protein Families:** Secreted Protein

### Product images:



Coomassie blue staining of purified PRH2 protein (Cat# [TP310681]). The protein was produced from HEK293T cells transfected with PRH2 cDNA clone (Cat# [RC210681]) using MegaTran 2.0 (Cat# [TT210002]).