

## Product datasheet for PH310677

### ENAH (NM\_001008493) Human Mass Spec Standard

#### Product data:

Product Type:	Mass Spec Standards
Description:	ENAH MS Standard C13 and N15-labeled recombinant protein (NP_001008493)
Species:	Human
Expression Host:	HEK293
Expression cDNA Clone or AA Sequence:	RC210677
Predicted MW:	66.3 kDa
Protein Sequence:	>RC210677 representing NM_001008493 Red=Cloning site Green=Tags(s)

MSEQSIQARAAMVYDDANKKWPAGGSTGFSRVHIYHHTGNNTFRVVGSRKIQDQVIVINCAIPKGLKY  
NQATQTFHQWRDARQVYGLNFGSKEDANVFASAMMHALEVLNSQETGPTLPRQNSQLPAQVQNGPSQEEL  
EIQRRQLQEQQRQKELERERLERERERERLERERLERERLERERLEQEQLERERQERERQERLERQERL  
ERQERLERQERLDRERQERQERERLERERERQERERQERERQERERQERERQERERERRISSAAAPASVETPLNSV  
LGDSSASEPGLQAASQPAETPSQQGIVLGPLAPPPPPPLPPGPAQASVALPPPPGPPPPPLPSTGPPPP  
PPPPPLPNQVPPPPPPPPAPPLPASGFFLASMSEDNRPLTGLAAAIAGAKLRKVSRLMEDTSFSPGGNAIG  
VNSASSKTDTRGNGPLPLGGSGLEEMESALLARRRRIAEKGSTIETEQKEDKGEDSEPVTSKASSTSTP  
EPIRKPWERTNTMNGSKSPVISRRDSPRKNQIVFDNRSYDSLHRPKSTPLSQPSANGVQTEGLDYDRLKQ  
DILDEMREKELTKLKEELIDAIRQELSKSNTA

TRTRPLEQKLI SEEDLAANDILDYKDDDDKV

Tag:	C-Myc/DDK
Purity:	> 80% as determined by SDS-PAGE and Coomassie blue staining
Concentration:	>0.05 µg/µL as determined by microplate BCA method
Labeling Method:	Labeled with [U- 13C6, 15N4]-L-Arginine and [U- 13C6, 15N2]-L-Lysine
Buffer:	25 mM Tris-HCl, 100 mM glycine, pH 7.3
Storage:	Store at -80°C. Avoid repeated freeze-thaw cycles.
Stability:	Stable for 3 months from receipt of products under proper storage and handling conditions.
RefSeq:	<a href="#">NP_001008493</a>
RefSeq Size:	13172
RefSeq ORF:	1773



[View online »](#)

**Synonyms:** ENA; MENA; NDPP1

**Locus ID:** 55740

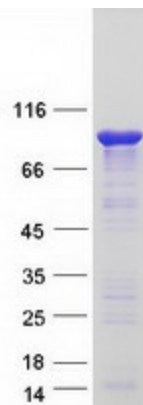
**UniProt ID:** [Q8N8S7](#)

**Cytogenetics:** 1q42.12

**Summary:** This gene encodes a member of the enabled/ vasodilator-stimulated phosphoprotein. Members of this gene family are involved in actin-based motility. This protein is involved in regulating the assembly of actin filaments and modulates cell adhesion and motility. Alternate splice variants of this gene have been correlated with tumor invasiveness in certain tissues and these variants may serve as prognostic markers. A pseudogene of this gene is found on chromosome 3. [provided by RefSeq, Sep 2016]

**Protein Pathways:** Regulation of actin cytoskeleton

### Product images:



Coomassie blue staining of purified ENAH protein (Cat# [TP310677]). The protein was produced from HEK293T cells transfected with ENAH cDNA clone (Cat# [RC210677]) using MegaTran 2.0 (Cat# [TT210002]).