

## Product datasheet for PH310664

### Serum Amyloid A (SAA1) (NM\_000331) Human Mass Spec Standard

#### Product data:

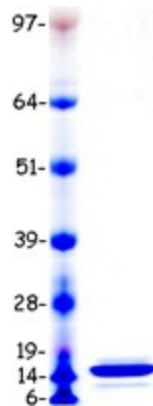
Product Type:	Mass Spec Standards
Description:	SAA1 MS Standard C13 and N15-labeled recombinant protein (NP_000322)
Species:	Human
Expression Host:	HEK293
Expression cDNA Clone or AA Sequence:	RC210664
Predicted MW:	13.5 kDa
Protein Sequence:	>RC210664 protein sequence <b>Red</b> =Cloning site <b>Green</b> =Tags(s)  MKLLTGLVFCSLVLGVSSRSFFSFLGEAFDGMWRAYSMDREANYIGSDKYFHARGNYDAAKRGPGGV WAAEAISDARENIQRFFGHGAEDSLADQAANEWGRSGKDPNHFRPAGLPEKY  <b>TRTRPLEQKLISEEDLAANDILDYKDDDDKV</b>
Tag:	C-Myc/DDK
Purity:	> 80% as determined by SDS-PAGE and Coomassie blue staining
Concentration:	>0.05 µg/µL as determined by microplate BCA method
Labeling Method:	Labeled with [U- 13C6, 15N4]-L-Arginine and [U- 13C6, 15N2]-L-Lysine
Buffer:	25 mM Tris-HCl, 100 mM glycine, pH 7.3
Storage:	Store at -80°C. Avoid repeated freeze-thaw cycles.
Stability:	Stable for 3 months from receipt of products under proper storage and handling conditions.
RefSeq:	<a href="#">NP_000322</a>
RefSeq Size:	678
RefSeq ORF:	366
Synonyms:	PIG4; SAA; SAA2; TP53I4
Locus ID:	6288
UniProt ID:	<a href="#">P02735</a> , <a href="#">P0DJ18</a>
Cytogenetics:	11p15.1



[View online »](#)

**Summary:**

This gene encodes a member of the serum amyloid A family of apolipoproteins. The encoded preproprotein is proteolytically processed to generate the mature protein. This protein is a major acute phase protein that is highly expressed in response to inflammation and tissue injury. This protein also plays an important role in HDL metabolism and cholesterol homeostasis. High levels of this protein are associated with chronic inflammatory diseases including atherosclerosis, rheumatoid arthritis, Alzheimer's disease and Crohn's disease. This protein may also be a potential biomarker for certain tumors. Finally, antimicrobial activity against *S. aureus* and *E. coli* resides in the N-terminal portion of the mature protein. Alternate splicing results in multiple transcript variants that encode the same protein. A pseudogene of this gene is found on chromosome 11. [provided by RefSeq, Jul 2020]

**Product images:**

Coomassie blue staining of purified SAA1 protein (Cat# [TP310664]). The protein was produced from HEK293T cells transfected with SAA1 cDNA clone (Cat# [RC210664]) using MegaTran 2.0 (Cat# [TT210002]).