

Product datasheet for PH310655

ROMO1 (NM_080748) Human Mass Spec Standard

Product data:

Product Type:	Mass Spec Standards
Description:	ROMO1 MS Standard C13 and N15-labeled recombinant protein (NP_542786)
Species:	Human
Expression Host:	HEK293
Expression cDNA Clone or AA Sequence:	RC210655
Predicted MW:	8.2 kDa
Protein Sequence:	>RC210655 protein sequence Red=Cloning site Green=Tags(s) MPVAVGPYQSQPSCFDRVKMGFVMGCAVGMAAGALFGTFSCLRIGMRGRELMGGIGKTMMSGGTFGTF MAIGMGIRC TRTRPLEQKLISEEDLAANDILDYKDDDDKV
Tag:	C-Myc/DDK
Purity:	> 80% as determined by SDS-PAGE and Coomassie blue staining
Concentration:	>0.05 µg/µL as determined by microplate BCA method
Labeling Method:	Labeled with [U- 13C6, 15N4]-L-Arginine and [U- 13C6, 15N2]-L-Lysine
Buffer:	25 mM Tris-HCl, 100 mM glycine, pH 7.3
Storage:	Store at -80°C. Avoid repeated freeze-thaw cycles.
Stability:	Stable for 3 months from receipt of products under proper storage and handling conditions.
RefSeq:	NP_542786
RefSeq Size:	477
RefSeq ORF:	237
Synonyms:	bA353C18.2; C20orf52; MTGM; MTGMP
Locus ID:	140823
UniProt ID:	P60602
Cytogenetics:	20q11.22

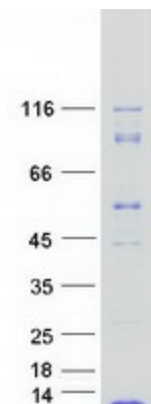


[View online »](#)

Summary: The protein encoded by this gene is a mitochondrial membrane protein that is responsible for increasing the level of reactive oxygen species (ROS) in cells. The protein also has antimicrobial activity against a variety of bacteria by inducing bacterial membrane breakage. [provided by RefSeq, Nov 2014]

Protein Families: Transmembrane

Product images:



Coomassie blue staining of purified ROMO1 protein (Cat# [TP310655]). The protein was produced from HEK293T cells transfected with ROMO1 cDNA clone (Cat# [RC210655]) using MegaTran 2.0 (Cat# [TT210002]).