

Product datasheet for PH310651

OIF (OGN) (NM_014057) Human Mass Spec Standard

Product data:

Product Type:	Mass Spec Standards
Description:	OGN MS Standard C13 and N15-labeled recombinant protein (NP_054776)
Species:	Human
Expression Host:	HEK293
Expression cDNA Clone or AA Sequence:	RC210651
Predicted MW:	33.9 kDa
Protein Sequence:	>RC210651 protein sequence Red=Cloning site Green=Tags(s) MKTLLQSTLLLLLLVPLIKPAPPTQQDSRIIYDYGTDNFEESIFSQDYEDKYL DGKNIKEKETVIIIPNEKS LQLQKDEAITPLPPKKNDEMPTCLLCVCLSGSVYCEEVDIDAVPPLPKESAYLYARFNKIKKLTAKDFA DIPNLRRLDFTGNLIEDIEDGTF SKLSLLEELSLAENQLLKLPLVLPKLT LFNAYNKIKSRGIKANAFK KLNNTFLYLDHNALESVPLNLPESLRVIHLQFNNIASITDDTFCKANDTSYIRDRIEEIRLEGNPVLG KHPNSFICLKRLPIGSYF TRTRPLEQKLI SEEDLAANDILDYKDDDDKV
Tag:	C-Myc/DDK
Purity:	> 80% as determined by SDS-PAGE and Coomassie blue staining
Concentration:	>0.05 µg/µL as determined by microplate BCA method
Labeling Method:	Labeled with [U- ¹³ C ₆ , ¹⁵ N ₄]-L-Arginine and [U- ¹³ C ₆ , ¹⁵ N ₂]-L-Lysine
Buffer:	25 mM Tris-HCl, 100 mM glycine, pH 7.3
Storage:	Store at -80°C. Avoid repeated freeze-thaw cycles.
Stability:	Stable for 3 months from receipt of products under proper storage and handling conditions.
RefSeq:	<u>NP_054776</u>
RefSeq Size:	2786
RefSeq ORF:	894
Synonyms:	OG; OIF; SLRR3A
Locus ID:	4969



[View online »](#)

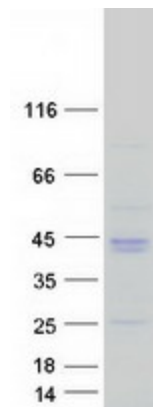
UniProt ID: [P20774](#), [A8K0R3](#), [Q7Z532](#), [B4DI63](#)

Cytogenetics: 9q22.31

Summary: This gene encodes a member of the small leucine-rich proteoglycan (SLRP) family of proteins. The encoded protein induces ectopic bone formation in conjunction with transforming growth factor beta and may regulate osteoblast differentiation. High expression of the encoded protein may be associated with elevated heart left ventricular mass. Alternative splicing results in multiple transcript variants. [provided by RefSeq, Jan 2016]

Protein Families: Secreted Protein

Product images:



Coomassie blue staining of purified OGN protein (Cat# [TP310651]). The protein was produced from HEK293T cells transfected with OGN cDNA clone (Cat# [RC210651]) using MegaTran 2.0 (Cat# [TT210002]).