

Product datasheet for PH310648

OTUB1 (NM_017670) Human Mass Spec Standard

Product data:

Product Type:	Mass Spec Standards
Description:	OTUB1 MS Standard C13 and N15-labeled recombinant protein (NP_060140)
Species:	Human
Expression Host:	HEK293
Expression cDNA Clone or AA Sequence:	RC210648
Predicted MW:	31.3 kDa
Protein Sequence:	>Peptide sequence encoded by RC210648 Blue=ORF Red=Cloning site Green=Tag(s) MAAEEPQQQKQEPLGSDSEGVNCLAYDEAIMAQDRIQQEIAVQNPLVSRLELSVLYKEYAEDDNIYQ QKIKDLHKKYSYIRKTRPDGNCFYRAFGFSHLEALLDDSKELQRFKAVSAKSKEDLVSQGFTEFTIEDF HNTFMDLIEQVEKQTSVADLLASFNDQSTSDYLVVYLRLLTSGYLQRESKFFEHFIEGGRTVKEFCQQE VEPMCKESDHIHIALAQUALSVSIQVEYMDRGEGETTNPPIFPEGSEPKVYLLYRPGHYDILYK TRTRPLEQKLISEEDLAANDILDYKDDDDKV Recombinant protein using RC210648 also available, TP310648M
Tag:	C-Myc/DDK
Purity:	> 80% as determined by SDS-PAGE and Coomassie blue staining
Concentration:	>0.05 µg/µL as determined by microplate BCA method
Labeling Method:	Labeled with [U- ¹³ C ₆ , ¹⁵ N ₄]-L-Arginine and [U- ¹³ C ₆ , ¹⁵ N ₂]-L-Lysine
Buffer:	25 mM Tris-HCl, 100 mM glycine, pH 7.3
Storage:	Store at -80°C. Avoid repeated freeze-thaw cycles.
Stability:	Stable for 3 months from receipt of products under proper storage and handling conditions.
RefSeq:	NP_060140
RefSeq Size:	2310
RefSeq ORF:	813
Synonyms:	HSPC263; OTB1; OTU1
Locus ID:	55611



[View online »](#)

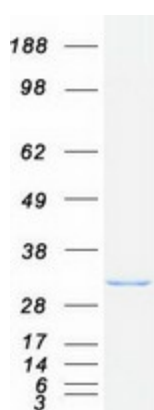
UniProt ID: [Q96FW1](#), [B3KUV5](#)

Cytogenetics: 11q13.1

Summary: The product of this gene is a member of the OTU (ovarian tumor) superfamily of predicted cysteine proteases. The encoded protein is a highly specific ubiquitin iso-peptidase, and cleaves ubiquitin from branched poly-ubiquitin chains but not from ubiquitinated substrates. It interacts with another ubiquitin protease and an E3 ubiquitin ligase that inhibits cytokine gene transcription in the immune system. It is proposed to function in specific ubiquitin-dependent pathways, possibly by providing an editing function for polyubiquitin chain growth. Alternative splicing results in multiple transcript variants. [provided by RefSeq, Jul 2008]

Protein Families: Protease

Product images:



Coomassie blue staining of purified OTUB1 protein (Cat# [TP310648]). The protein was produced from HEK293T cells transfected with OTUB1 cDNA clone (Cat# [RC210648]) using MegaTran 2.0 (Cat# [TT210002]).