

Product datasheet for PH310635

Ephrin A1 (EFNA1) (NM_004428) Human Mass Spec Standard

Product data:

Product Type:	Mass Spec Standards
Description:	EFNA1 MS Standard C13 and N15-labeled recombinant protein (NP_004419)
Species:	Human
Expression Host:	HEK293
Expression cDNA Clone or AA Sequence:	RC210635
Predicted MW:	23.8 kDa
Protein Sequence:	>RC210635 protein sequence Red=Cloning site Green=Tags(s) MEFLWAPLLGLCCSLAAADRHTVFNSSNPKFRNEDYTIHVQLNDYVDIICPHYEDHSVADAAMEQYILY LVEHEEYQLCQPQSKDQVRWQCNRPSAKHGPEKLSEKFQRFPTFTLGKEFKEGHSYYYISKPIHQHEDRC LRLKVTYSGKITHSPQAHDNPQEKRLAADDPEVRVLHLSIGHSAAPRLFPLAWTVLLLPLLLLQTP TRTRPLEQKLI SEEDLAANDILDYKDDDDKV
Tag:	C-Myc/DDK
Purity:	> 80% as determined by SDS-PAGE and Coomassie blue staining
Concentration:	>0.05 µg/µL as determined by microplate BCA method
Labeling Method:	Labeled with [U- 13C6, 15N4]-L-Arginine and [U- 13C6, 15N2]-L-Lysine
Buffer:	25 mM Tris-HCl, 100 mM glycine, pH 7.3
Storage:	Store at -80°C. Avoid repeated freeze-thaw cycles.
Stability:	Stable for 3 months from receipt of products under proper storage and handling conditions.
RefSeq:	NP_004419
RefSeq Size:	1590
RefSeq ORF:	615
Synonyms:	B61; ECKLG; EFL1; EPLG1; GMAN; LERK-1; LERK1; TNFAIP4
Locus ID:	1942
UniProt ID:	P20827



[View online »](#)

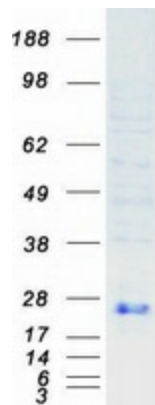
Cytogenetics: 1q22

Summary: This gene encodes a member of the ephrin (EPH) family. The ephrins and EPH-related receptors comprise the largest subfamily of receptor protein-tyrosine kinases and have been implicated in mediating developmental events, especially in the nervous system and in erythropoiesis. Based on their structures and sequence relationships, ephrins are divided into the ephrin-A (EFNA) class, which are anchored to the membrane by a glycosylphosphatidylinositol linkage, and the ephrin-B (EFNB) class, which are transmembrane proteins. This gene encodes an EFNA class ephrin which binds to the EPHA2, EPHA4, EPHA5, EPHA6, and EPHA7 receptors. Two transcript variants that encode different isoforms were identified through sequence analysis. [provided by RefSeq, Jul 2008]

Protein Families: Druggable Genome

Protein Pathways: Axon guidance

Product images:



Coomassie blue staining of purified EFNA1 protein (Cat# [TP310635]). The protein was produced from HEK293T cells transfected with EFNA1 cDNA clone (Cat# [RC210635]) using MegaTran 2.0 (Cat# [TT210002]).