

## Product datasheet for PH310613

### Mitochondrial ribosomal protein L11 (MRPL11) (NM\_170738) Human Mass Spec Standard

#### Product data:

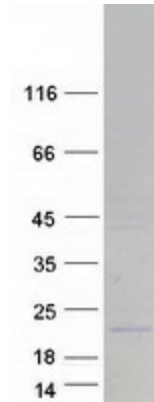
Product Type:	Mass Spec Standards
Description:	MRPL11 MS Standard C13 and N15-labeled recombinant protein (NP_733934)
Species:	Human
Expression Host:	HEK293
Expression cDNA Clone or AA Sequence:	RC210613
Predicted MW:	18 kDa
Protein Sequence:	<p>&gt;RC210613 representing NM_170738</p> <p>Red=Cloning site Green=Tags(s)</p> <p>MSKLGRAARGLRKPERGVSINQFCKEFNERTKDIKEGIPLPTKILVKPDRTFEIKIGQPTVSYFLKAAAG          IEKGARQTGKEVAGLVTLKHVYEIARIKAQDEAFALQDVPLSSVRSIIGSARSLGIRVVKDLSSEELAA          FQKERAIFLAAQKEADLAAQEEAAKK</p> <p>TRTRPLEQKLISEEDLAANDILDYKDDDDKV</p>
Tag:	C-Myc/DDK
Purity:	> 80% as determined by SDS-PAGE and Coomassie blue staining
Concentration:	>0.05 µg/µL as determined by microplate BCA method
Labeling Method:	Labeled with [U- <sup>13</sup> C <sub>6</sub> , <sup>15</sup> N <sub>4</sub> ]-L-Arginine and [U- <sup>13</sup> C <sub>6</sub> , <sup>15</sup> N <sub>2</sub> ]-L-Lysine
Buffer:	25 mM Tris-HCl, 100 mM glycine, pH 7.3
Storage:	Store at -80°C. Avoid repeated freeze-thaw cycles.
Stability:	Stable for 3 months from receipt of products under proper storage and handling conditions.
RefSeq:	<a href="#">NP_733934</a>
RefSeq Size:	762
RefSeq ORF:	498
Synonyms:	CGI-113; L11MT; MRP-L11
Locus ID:	65003
UniProt ID:	<a href="#">Q9Y3B7</a>


[View online »](#)

**Cytogenetics:** 11q13.2

**Summary:** This nuclear gene encodes a 39S subunit component of the mitochondrial ribosome. Alternative splicing results in multiple transcript variants. Pseudogenes for this gene are found on chromosomes 5 and 12. [provided by RefSeq, May 2014]

## Product images:



Coomassie blue staining of purified MRPL11 protein (Cat# [TP310613]). The protein was produced from HEK293T cells transfected with MRPL11 cDNA clone (Cat# [RC210613]) using MegaTran 2.0 (Cat# [TT210002]).