

Product datasheet for PH310607

FXYD6 (NM_022003) Human Mass Spec Standard

Product data:

Product Type:	Mass Spec Standards
Description:	FXYD6 MS Standard C13 and N15-labeled recombinant protein (NP_071286)
Species:	Human
Expression Host:	HEK293
Expression cDNA Clone or AA Sequence:	RC210607
Predicted MW:	10.5 kDa
Protein Sequence:	>RC210607 protein sequence Red=Cloning site Green=Tags(s) MELVLVFLCSLLAPMVLASAAEKEKEMDPFHVDYQTLRIGGLVFAVVLFSVGILLILSRRCCKSFNQKPR APGDDEEAQVENLITANATEPQKAEN TRTRPLEQKLISEEDLAANDILDYKDDDDKV
Tag:	C-Myc/DDK
Purity:	> 80% as determined by SDS-PAGE and Coomassie blue staining
Concentration:	>0.05 µg/µL as determined by microplate BCA method
Labeling Method:	Labeled with [U- 13C6, 15N4]-L-Arginine and [U- 13C6, 15N2]-L-Lysine
Buffer:	25 mM Tris-HCl, 100 mM glycine, pH 7.3
Storage:	Store at -80°C. Avoid repeated freeze-thaw cycles.
Stability:	Stable for 3 months from receipt of products under proper storage and handling conditions.
RefSeq:	NP_071286
RefSeq Size:	2056
RefSeq ORF:	285
Locus ID:	53826
UniProt ID:	Q9H0Q3 , A0A024R3I8
Cytogenetics:	11q23.3



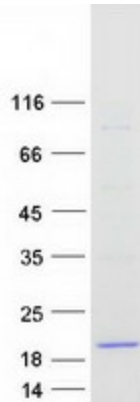
[View online »](#)

Summary:

This gene encodes a member of the FXVD family of transmembrane proteins. This particular protein encodes phosphohippolin, which likely affects the activity of Na,K-ATPase. Multiple alternatively spliced transcript variants encoding the same protein have been described. Related pseudogenes have been identified on chromosomes 10 and X. Read-through transcripts have been observed between this locus and the downstream sodium/potassium-transporting ATPase subunit gamma (FXVD2, GeneID 486) locus.[provided by RefSeq, Feb 2011]

Protein Families:

Ion Channels: Other, Transmembrane

Product images:

Coomassie blue staining of purified FXVD6 protein (Cat# [TP310607]). The protein was produced from HEK293T cells transfected with FXVD6 cDNA clone (Cat# [RC210607]) using MegaTran 2.0 (Cat# [TT210002]).