

Product datasheet for PH310604

INPP1 (NM_002194) Human Mass Spec Standard

Product data:

Product Type:	Mass Spec Standards
Description:	INPP1 MS Standard C13 and N15-labeled recombinant protein (NP_002185)
Species:	Human
Expression Host:	HEK293
Expression cDNA Clone or AA Sequence:	RC210604
Predicted MW:	44 kDa
Protein Sequence:	>RC210604 protein sequence Red=Cloning site Green=Tags(s)
	MSDILRELLCVSEKAANIARACRQEQEALFQLLIEEKKEGEKNKFAVDFKTLADVLVQVEIKQNMENKFP GLEKNIFGEESNEFTNDWGEKITLRLCSTEEETAELLKVLNNGNKVASEALARVVHQDVAFDPTLDSTE INVPQDILGIWVDPIDSTYQYIKGSADIKSNQGIFFCGLQCVTILIGVYDIQTGVPLMGVINQPFVSRDP NTRLRWKGQCYWGLSYMGTNMHSLQLTISRNGSEHTGTGNTGSEAAFSPSFSAVISTSEKETIKAALSRVC GDRIFGAAGAGYKSLCVVQGLVDIYIFSEDITFKWDSAAHAAILRAMGGGIVDLKECLERNPETGLDLPQ LVYHVENEGAAGVDRWANKGGLIAYRSRKRLETFLSLLVQNLAPAETHT
	TRTRPLEQKLISEEDLAANDILDYKDDDDKV
Tag:	C-Myc/DDK
Purity:	> 80% as determined by SDS-PAGE and Coomassie blue staining
Concentration:	>0.05 µg/µL as determined by microplate BCA method
Labeling Method:	Labeled with [U- ¹³ C ₆ , ¹⁵ N ₄]-L-Arginine and [U- ¹³ C ₆ , ¹⁵ N ₂]-L-Lysine
Buffer:	25 mM Tris-HCl, 100 mM glycine, pH 7.3
Storage:	Store at -80°C. Avoid repeated freeze-thaw cycles.
Stability:	Stable for 3 months from receipt of products under proper storage and handling conditions.
RefSeq:	<u>NP_002185</u>
RefSeq Size:	2035
RefSeq ORF:	1197
Locus ID:	3628
UniProt ID:	<u>P49441, Q6IBG4</u>



[View online »](#)

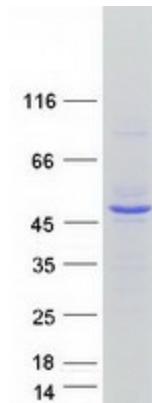
Cytogenetics: 2q32.2

Summary: This gene encodes the enzyme inositol polyphosphate-1-phosphatase, one of the enzymes involved in phosphatidylinositol signaling pathways. This enzyme removes the phosphate group at position 1 of the inositol ring from the polyphosphates inositol 1,4-bisphosphate and inositol 1,3,4-trisphosphate. [provided by RefSeq, Jul 2008]

Protein Families: Druggable Genome

Protein Pathways: Inositol phosphate metabolism, Metabolic pathways, Phosphatidylinositol signaling system

Product images:



Coomassie blue staining of purified INPP1 protein (Cat# [TP310604]). The protein was produced from HEK293T cells transfected with INPP1 cDNA clone (Cat# [RC210604]) using MegaTran 2.0 (Cat# [TT210002]).