

Product datasheet for PH310589

MAT2B (NM_013283) Human Mass Spec Standard

Product data:

Product Type:	Mass Spec Standards
Description:	MAT2B MS Standard C13 and N15-labeled recombinant protein (NP_037415)
Species:	Human
Expression Host:	HEK293
Expression cDNA Clone or AA Sequence:	RC210589
Predicted MW:	37.5 kDa
Protein Sequence:	>RC210589 protein sequence Red=Cloning site Green=Tags(s)
	MVGREKELSIHFVPGSCRLVEEEVNIPNRRVLVTGATGLLGRAVHKEFQQNNWHAVGCGFRRARPKFEQV NLLDSNAVHHIIHDFQPHVIVHCAAERRPDVVENQPDAAASQLNVDASGNLAKEAAAVGAFLIYISSDYVF DGTNPPYREGDIPAPLNLYGKTKLDGEKAVLENNLGAAVLRIPILYGEVEKLEESAVTVMFDKVFQFSNKS ANMDHWQQRFPPTHVKDVATVCRQLAEKRMLDPSIKGTFHWSGNEQMTKYEMACAIADAFNLPSSHLRPIT DSPVLGAQRPRNAQLDCSKLETLGIGQRTPFIRIGIKESLWPFLIDKRWRQTVFH
	TRTRPLEQKLI SEEDLAANDILDYKDDDDKV
Tag:	C-Myc/DDK
Purity:	> 80% as determined by SDS-PAGE and Coomassie blue staining
Concentration:	>0.05 µg/µL as determined by microplate BCA method
Labeling Method:	Labeled with [U- ¹³ C ₆ , ¹⁵ N ₄]-L-Arginine and [U- ¹³ C ₆ , ¹⁵ N ₂]-L-Lysine
Buffer:	25 mM Tris-HCl, 100 mM glycine, pH 7.3
Storage:	Store at -80°C. Avoid repeated freeze-thaw cycles.
Stability:	Stable for 3 months from receipt of products under proper storage and handling conditions.
RefSeq:	<u>NP_037415</u>
RefSeq Size:	2154
RefSeq ORF:	1002
Synonyms:	MAT-II; MATIIBeta; Nbla02999; SDR23E1; TGR
Locus ID:	27430



[View online »](#)

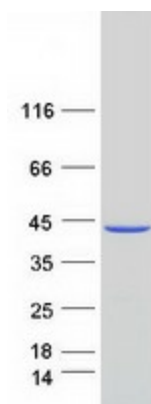
UniProt ID: [Q9NZL9](#), [A0A140VIP2](#)

Cytogenetics: 5q34

Summary: The protein encoded by this gene belongs to the methionine adenosyltransferase (MAT) family. MAT catalyzes the biosynthesis of S-adenosylmethionine from methionine and ATP. This protein is the regulatory beta subunit of MAT. Alternative splicing results in multiple transcript variants encoding different isoforms. [provided by RefSeq, Nov 2012]

Protein Pathways: Cysteine and methionine metabolism, Metabolic pathways, Selenoamino acid metabolism

Product images:



Coomassie blue staining of purified MAT2B protein (Cat# [TP310589]). The protein was produced from HEK293T cells transfected with MAT2B cDNA clone (Cat# [RC210589]) using MegaTran 2.0 (Cat# [TT210002]).