

Product datasheet for PH310563

ATG5 (NM_004849) Human Mass Spec Standard

Product data:

Product Type:	Mass Spec Standards
Description:	ATG5 MS Standard C13 and N15-labeled recombinant protein (NP_004840)
Species:	Human
Expression Host:	HEK293
Expression cDNA Clone or AA Sequence:	RC210563
Predicted MW:	32.4 kDa
Protein Sequence:	>RC210563 protein sequence Red=Cloning site Green=Tags(s) MTDDKDVLRDVWFGRIPTCFTLYQDEITEREAEPYLLLPVSYLTLVTDKVKKHFQKVMRQEDISEIWF EYEGTPLKWHYPIGLLFDLLASSSALPWNITVHFKSFPEKDLLHCPKDAIEAHFMSCKEADALKHKSQ VINEMQKKDHKQLWMGLQNDRFDQFWA INRKLMEYPAEENGFYIPFRIYQTTTTERPFIQKLF R PVAADG QLHTLGDLLKEVCP SAIDPEDGEKKNQVMIHGIEPMLETPLQWLSEHLSYPDNFLHISIIIPQPTD TRTRPLEQKLI SEEDLAANDILDYKDDDDKV
Tag:	C-Myc/DDK
Purity:	> 80% as determined by SDS-PAGE and Coomassie blue staining
Concentration:	>0.05 µg/µL as determined by microplate BCA method
Labeling Method:	Labeled with [U- ¹³ C ₆ , ¹⁵ N ₄]-L-Arginine and [U- ¹³ C ₆ , ¹⁵ N ₂]-L-Lysine
Buffer:	25 mM Tris-HCl, 100 mM glycine, pH 7.3
Storage:	Store at -80°C. Avoid repeated freeze-thaw cycles.
Stability:	Stable for 3 months from receipt of products under proper storage and handling conditions.
RefSeq:	NP_004840
RefSeq Size:	3260
RefSeq ORF:	825
Synonyms:	APG5; APG5-LIKE; APG5L; ASP; hAPG5; SCAR25
Locus ID:	9474
UniProt ID:	Q9H1Y0 , Q7Z3H3 , A9UGY9



[View online »](#)

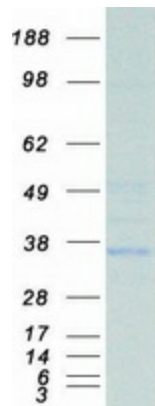
Cytogenetics: 6q21

Summary: The protein encoded by this gene, in combination with autophagy protein 12, functions as an E1-like activating enzyme in a ubiquitin-like conjugating system. The encoded protein is involved in several cellular processes, including autophagic vesicle formation, mitochondrial quality control after oxidative damage, negative regulation of the innate antiviral immune response, lymphocyte development and proliferation, MHC II antigen presentation, adipocyte differentiation, and apoptosis. Several transcript variants encoding different protein isoforms have been found for this gene. [provided by RefSeq, Sep 2015]

Protein Families: Druggable Genome

Protein Pathways: Regulation of autophagy, RIG-I-like receptor signaling pathway

Product images:



Coomassie blue staining of purified ATG5 protein (Cat# [TP310563]). The protein was produced from HEK293T cells transfected with ATG5 cDNA clone (Cat# [RC210563]) using MegaTran 2.0 (Cat# [TT210002]).