

Product datasheet for PH310540

RANBP10 (NM_020850) Human Mass Spec Standard

Product data:

| | |
|---------------------------------------|---|
| Product Type: | Mass Spec Standards |
| Description: | RANBP10 MS Standard C13 and N15-labeled recombinant protein (NP_065901) |
| Species: | Human |
| Expression Host: | HEK293 |
| Expression cDNA Clone or AA Sequence: | RC210540 |
| Predicted MW: | 67.2 kDa |
| Protein Sequence: | >RC210540 protein sequence Red=Cloning site Green=Tags(s) |

MAAATADPGAGNPQPGDSSGGGAGGGLPSPGEQELSRRLQRLYPVAVNQETPLPRSWSPKDKYNYIGLSQ
GNLRVHYKGHGKHKDAASVRATHPIPAACGIYYFEVKIVSKGRDGYMGIQLSAQGVNMRNLPGWKHSY
GYHGDDGHSFCSSGTGQPYGPTFTTGDVIGCCVNLINGTCFYTKNGHSLGIAFTDLPANLYPTVGLQTPG
EIVDANFGQQPFDFIEDYMREWRKAVQGTVHCFPI SARLGEWQAVLQNMVSSYL VHHGYCATATAFARM
TETPIQEEQASIKNRQKIQKLVLEGRVGEAIEETQRFYPLLEHNPMLL FMLKCRQFVEMVNGTDSEVRS
LSSRSPKSQDSYPGSPSLSPRHGPSSSHMHNTGADSPSCSNGVASTKSKQNHSKYPAPSSSSSSSSSSSS
SSPSSVNYSESNSTDSTKSQHSSSTSNQETSDSEVEMAEHYPNGVLGSMSTRIVNGAYKHEDLQTDSS
MDDRHPRRQLCGGNQAATERIILFGRELQALSEQL GREYGKLAHTEMLQDAFSL LAYS DPWSCPVGQQL
DPIQREPVCAALNSAILESQNLPKQPPLMLALGQASECLRLMARAGLGSCSFARVDDYLH

TRTRPLEQKLISEEDLAANDILDYKDDDDKV

| | |
|------------------|--|
| Tag: | C-Myc/DDK |
| Purity: | > 80% as determined by SDS-PAGE and Coomassie blue staining |
| Concentration: | >0.05 µg/µL as determined by microplate BCA method |
| Labeling Method: | Labeled with [U- ¹³ C ₆ , ¹⁵ N ₄]-L-Arginine and [U- ¹³ C ₆ , ¹⁵ N ₂]-L-Lysine |
| Buffer: | 25 mM Tris-HCl, 100 mM glycine, pH 7.3 |
| Storage: | Store at -80°C. Avoid repeated freeze-thaw cycles. |
| Stability: | Stable for 3 months from receipt of products under proper storage and handling conditions. |
| RefSeq: | NP_065901 |
| RefSeq Size: | 5305 |
| RefSeq ORF: | 1860 |



[View online »](#)

Locus ID: 57610

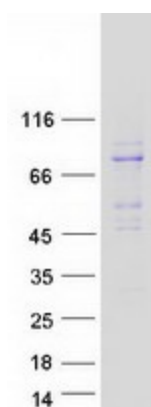
UniProt ID: [Q6VN20](#)

Cytogenetics: 16q22.1

Summary: RAN is a small GTPase involved in the assembly of microtubules to form mitotic spindles. The protein encoded by this gene is a cytoplasmic guanine nucleotide exchange factor (GEF) that binds beta-tubulin and has GEF activity toward RAN. The encoded protein plays a role in the formation of noncentrosomal microtubules. In addition, this protein may be involved in the regulation of D(1) receptor signaling by protein kinase C delta and protein kinase C gamma. Several transcript variants encoding different isoforms have been found for this gene. [provided by RefSeq, Feb 2016]

Protein Families: Druggable Genome

Product images:



Coomassie blue staining of purified RANBP10 protein (Cat# [TP310540]). The protein was produced from HEK293T cells transfected with RANBP10 cDNA clone (Cat# [RC210540]) using MegaTran 2.0 (Cat# [TT210002]).