

Product datasheet for PH310539

RBM35A (ESRP1) (NM_001034915) Human Mass Spec Standard

Product data:

Product Type:	Mass Spec Standards
Description:	ESRP1 MS Standard C13 and N15-labeled recombinant protein (NP_001030087)
Species:	Human
Expression Host:	HEK293
Expression cDNA Clone or AA Sequence:	RC210539
Predicted MW:	75.1 kDa
Protein Sequence:	>RC210539 protein sequence Red=Cloning site Green=Tags(s)

MTASPDYLVVLFGITAGATGAKLGSDEKELILLFWKVVDLANKKVGQLHEVLVRPDQLELTEDCKEETKI
DVESLSSASQLDQALRQFNQSVSNELNIGVTSFCLCTDQQLHVRQILHPEASKKNVLLPECFYSFFDLR
KEFKKCCPGSPDIDKLDVATMTEYLNFEKSSSVSRYGASQVEDMGNIILAMISEPYNHRFSDPERVNYKF
ESGTCCKMELIDDNTVVRARGLPWQSSDQDIARFFKGLNIAKGGAAALCLNAQRRNGEALVRFVSEEHRD
LALQRHKHMGTRYIEVYKATGEDFLKIAGGTSNEVAQFLSKENQVIVMRGLPFTATAEEVVAFFGQHC
PITGGKEGILFVTYPDGRPTGDAFVLFACEEYAQNALRKHKDLLGKRYIELFRSTAAEVQQLNRFSSAP
LIPLPTPPIIPVLPQQFVPPTNVRDCIRLRGLPYAATIEDILDFLGEFATDIRTHGVHMLNMQGRPSGD
AFIQMSADRAFMAAQCHKKNMKDRYVEVFQCSAEEMNFVLMGGTLNRNGLSPPPCLSPPSYTFPAPAA
VIPTAAIYQPSVILNPRALQPSTAYYPAGTQLFMNYTAYYPSPPGSPNSLGYFPTAANLSGVPPQPGTV
VRMQGLAYNTGVKEILNFSQGYQYATEDGLIHTNDQARTLPKEWVCI

TRTRPLEQKLISEEDLAANDILDYKDDDDKV

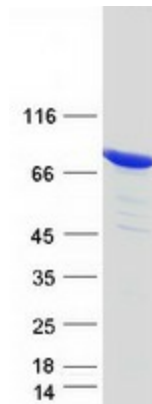
Tag:	C-Myc/DDK
Purity:	> 80% as determined by SDS-PAGE and Coomassie blue staining
Concentration:	>0.05 µg/µL as determined by microplate BCA method
Labeling Method:	Labeled with [U- 13C6, 15N4]-L-Arginine and [U- 13C6, 15N2]-L-Lysine
Buffer:	25 mM Tris-HCl, 100 mM glycine, pH 7.3
Storage:	Store at -80°C. Avoid repeated freeze-thaw cycles.
Stability:	Stable for 3 months from receipt of products under proper storage and handling conditions.
RefSeq:	NP_001030087
RefSeq Size:	3794



[View online >](#)

RefSeq ORF:	2031
Synonyms:	DFNB109; RBM35A; RMB35A
Locus ID:	54845
UniProt ID:	Q6NXG1
Cytogenetics:	8q22.1
Summary:	ESRP1 is an epithelial cell-type-specific splicing regulator (Warzecha et al., 2009 [PubMed 19285943]).[supplied by OMIM, Aug 2009]

Product images:



Coomassie blue staining of purified ESRP1 protein (Cat# [TP310539]). The protein was produced from HEK293T cells transfected with ESRP1 cDNA clone (Cat# [RC210539]) using MegaTran 2.0 (Cat# [TT210002]).