

Product datasheet for PH310536

OXLD1 (NM_001039842) Human Mass Spec Standard

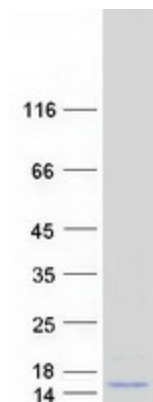
Product data:

Product Type:	Mass Spec Standards
Description:	C17orf90 MS Standard C13 and N15-labeled recombinant protein (NP_001034931)
Species:	Human
Expression Host:	HEK293
Expression cDNA Clone or AA Sequence:	RC210536
Predicted MW:	15.9 kDa
Protein Sequence:	<p>>RC210536 protein sequence</p> <p>Red=Cloning site Green=Tags(s)</p> <p>MLLRRVVEGGRAVAAAVRGSGARRFSSPDCCQRLPGGGSFLQRHHPGAQAPDGRRKFGTDHVEVGSQAGA DGTRPPKASLPPELQPPTNCCMSGCPNCVWVEYADRLLQHFQDGGERALAALEEHVADENLKAFLRMEIR LHTRCGG</p> <p>TRTRPLEQKLISEEDLAANDILDYKDDDDKV</p>
Tag:	C-Myc/DDK
Purity:	> 80% as determined by SDS-PAGE and Coomassie blue staining
Concentration:	>0.05 µg/µL as determined by microplate BCA method
Labeling Method:	Labeled with [U- ¹³ C ₆ , ¹⁵ N ₄]-L-Arginine and [U- ¹³ C ₆ , ¹⁵ N ₂]-L-Lysine
Buffer:	25 mM Tris-HCl, 100 mM glycine, pH 7.3
Storage:	Store at -80°C. Avoid repeated freeze-thaw cycles.
Stability:	Stable for 3 months from receipt of products under proper storage and handling conditions.
RefSeq:	<u>NP_001034931</u>
RefSeq Size:	635
RefSeq ORF:	441
Synonyms:	C17orf90
Locus ID:	339229
UniProt ID:	<u>Q5BKU9</u>


[View online »](#)

Cytogenetics: 17q25.3

Product images:



Coomassie blue staining of purified OXLD1 protein (Cat# [TP310536]). The protein was produced from HEK293T cells transfected with OXLD1 cDNA clone (Cat# [RC210536]) using MegaTran 2.0 (Cat# [TT210002]).