

Product datasheet for PH310529

CTBP1 (NM_001328) Human Mass Spec Standard

Product data:

Product Type:	Mass Spec Standards
Description:	CTBP1 MS Standard C13 and N15-labeled recombinant protein (NP_001319)
Species:	Human
Expression Host:	HEK293
Expression cDNA Clone or AA Sequence:	RC210529
Predicted MW:	47.5 kDa
Protein Sequence:	>RC210529 protein sequence Red=Cloning site Green=Tags(s)

MGSSHLNKGKPLGVRPPIMNGPLHPRPLVALLDGRDCTVEMPILKDVATVAFCDQSTQEIEHKVLNEA
VGALMYHTITLTREDLEKFKALRIIVRIGSGFDNIDIKSAGDLGIAVCNVPAASVEETADSTLCHILNLY
RRATWLHQALREGTRVQSVEQIREVASGAARIRGETLGIIGLGRVQQAVALRAKAFGNVLFYDPYLSDG
VERALGLQRVSTLQDLLFHSDCVTLHCGLNEHNLHLLINDFTVKQMRQGAFLVNTARGGLVDEKALAQALK
EGRIRGAALDVHESEPLSFSQGPLKDAPNLICTPHAAWYSEQASIEMREEAAREIRRAITGRIPDSLKNC
VNKDHLTAATHWASMDPAVVHPELNGAAYRYPPGVVGVAPTGIPAAVEGIVPSAMSLSHGLPPVAHPPHA
PSPGQTVKPEADRDHASDQL

TRTRPLEQKLI SEEDLAANDILDYKDDDDKV

Tag:	C-Myc/DDK
Purity:	> 80% as determined by SDS-PAGE and Coomassie blue staining
Concentration:	>0.05 µg/µL as determined by microplate BCA method
Labeling Method:	Labeled with [U- ¹³ C ₆ , ¹⁵ N ₄]-L-Arginine and [U- ¹³ C ₆ , ¹⁵ N ₂]-L-Lysine
Buffer:	25 mM Tris-HCl, 100 mM glycine, pH 7.3
Storage:	Store at -80°C. Avoid repeated freeze-thaw cycles.
Stability:	Stable for 3 months from receipt of products under proper storage and handling conditions.
RefSeq:	<u>NP_001319</u>
RefSeq Size:	2288
RefSeq ORF:	1320
Synonyms:	BARS; HADDTS



[View online »](#)

Locus ID: 1487

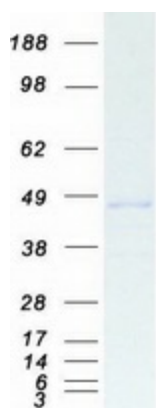
UniProt ID: [Q13363](#), [X5D8Y5](#)

Cytogenetics: 4p16.3

Summary: This gene encodes a protein that binds to the C-terminus of adenovirus E1A proteins. This phosphoprotein is a transcriptional repressor and may play a role during cellular proliferation. This protein and the product of a second closely related gene, CTBP2, can dimerize. Both proteins can also interact with a polycomb group protein complex which participates in regulation of gene expression during development. Alternative splicing of transcripts from this gene results in multiple transcript variants. [provided by RefSeq, Jul 2008]

Protein Pathways: Chronic myeloid leukemia, Notch signaling pathway, Pathways in cancer, Wnt signaling pathway

Product images:



Coomassie blue staining of purified CTBP1 protein (Cat# [TP310529]). The protein was produced from HEK293T cells transfected with CTBP1 cDNA clone (Cat# [RC210529]) using MegaTran 2.0 (Cat# [TT210002]).