

## Product datasheet for PH310523

### MAN2B2 (NM\_015274) Human Mass Spec Standard

#### Product data:

Product Type:	Mass Spec Standards
Description:	MAN2B2 MS Standard C13 and N15-labeled recombinant protein (NP_056089)
Species:	Human
Expression Host:	HEK293
Expression cDNA Clone or AA Sequence:	RC210523
Predicted MW:	114 kDa
Protein Sequence:	>RC210523 protein sequence Red=Cloning site Green=Tags(s)

MGQLCWLPLLAPLLLLRPPGVQSAGPIRAFVVP HSHMDVGVVYTVQESMRYAANVYTSVVEELARGQQR  
RFIAVEQEFFFRLWWDGVASDQQKYQVRQLLEGRLEFVIGGQVMHDEAVTHLDDQILQLTEGHGFLYETF  
GIRPQFSWHVDPFGASATPTLFLALAGFNAHLGSRIDYDLKAAMQEARGLQFVWRGSPSLSERQEIFTHI  
MDQYSYCTPSHIPFSNRSGFYWNGVAVFPKPPDGVYPMSEVTPANINLYAEALVANVKQRAAWFRTP  
HVLWPWGCDKQFFNASVQFANMDPLLDHINSHAAELGVSVQYATLGDYFRALHALNVTWRVRDHHDFLPY  
STEPFQAWTGFYTSRSSLKGLARRASALLYAGESMFTRYLWPAPRGHLDPWTALQQLQRLRWAVSEVQHH  
DAITGTESPKVRDMYATHLASGMLGVRKLMASIVLDELQPQAPMAASSDAGPAGHFASVYNPLAWTVTTI  
VTLTVGFGPVRVTDEAGHPVPSQIQNSTETPSAYDLLILTTIPGLSYRHSIRPTAGA QEGTQEPAAATVA  
STLQFGRRLRRRSHAGRYLVPVANDCYIVLLDQDTNLMHSIWERSNRTRVVTQEFLEYHVNRDVKQGP  
ISDNYLFTPGKAAVPAWEAEMEIVAGQLVTEIRQYFYRNMATAQNYTYAIRSRLTHVPQGHGDELCHRI  
EQEYQAGPLELNREAVLRTSTNLNSQQVIYSDNNGYQMQRPPYVSYVNNIARNYPMVQSASFMEDGKSR  
LVLLSERAHGISSQGNQVEVMLHRRLLWNNFDWDLGYNLTLNDTSVVHPVLWLLLSGWSLTTALRQRSAL  
ALQHRPVVLFGLAGTAPKLPQPQQEAVTLPPNLHLQILSIPGWRYSSNHTHSQNLKRGHRGEAQADL  
RRVLLRLYHLYEVGEDPVLSPQVTVNLEAVLQALGSVVAVEERSLTGTWDL SMLHRWSVRTGPRHRGDT  
TSPSRPPGGPIITVHPKEIRTFIHFQQQ

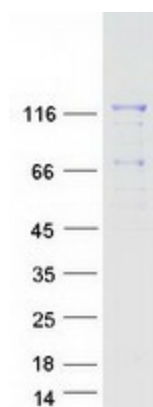
TRTRPLEQKLI SEEDLAANDILDYKDDDDKV

Tag:	C-Myc/DDK
Purity:	> 80% as determined by SDS-PAGE and Coomassie blue staining
Concentration:	>0.05 µg/µL as determined by microplate BCA method
Labeling Method:	Labeled with [U- <sup>13</sup> C <sub>6</sub> , <sup>15</sup> N <sub>4</sub> ]-L-Arginine and [U- <sup>13</sup> C <sub>6</sub> , <sup>15</sup> N <sub>2</sub> ]-L-Lysine
Buffer:	25 mM Tris-HCl, 100 mM glycine, pH 7.3
Storage:	Store at -80°C. Avoid repeated freeze-thaw cycles.



[View online »](#)

Stability:	Stable for 3 months from receipt of products under proper storage and handling conditions.
RefSeq:	<a href="#">NP_056089</a>
RefSeq Size:	4201
RefSeq ORF:	3027
Locus ID:	23324
UniProt ID:	<a href="#">Q9Y2E5</a>
Cytogenetics:	4p16.1
Protein Families:	Druggable Genome, Secreted Protein
Protein Pathways:	Other glycan degradation

**Product images:**

Coomassie blue staining of purified MAN2B2 protein (Cat# [TP310523]). The protein was produced from HEK293T cells transfected with MAN2B2 cDNA clone (Cat# [RC210523]) using MegaTran 2.0 (Cat# [TT210002]).