

Product datasheet for PH310521

Aminopeptidase A (ENPEP) (NM_001977) Human Mass Spec Standard

Product data:

| | |
|---------------------------------------|---|
| Product Type: | Mass Spec Standards |
| Description: | ENPEP MS Standard C13 and N15-labeled recombinant protein (NP_001968) |
| Species: | Human |
| Expression Host: | HEK293 |
| Expression cDNA Clone or AA Sequence: | RC210521 |
| Predicted MW: | 109.3 kDa |
| Protein Sequence: | >RC210521 protein sequence Red=Cloning site Green=Tags(s) |

MNFAEREGSKRYCIQTKHVAILCAVVVGVGLIVGLAVGLTRSCDSSGDDGGPGTAPAPSHLPSSTASPSGP
PAQDQDIPCASEDESGQWKNFRLPDFVNPVHYDLHVKPLLEEDTYTGTVSI SINLSAPTRYLWLHLRETR
ITRLELKRPSGDQVQVRRCFEYKKQEYVVVEAEELTPSSGDGLYLLTMEFAGWLNGLVGFYRTTYTE
NGRVKSIIVATDHEPTDARKSFPCFDEPNKKATYTI SITHPKKEYGALSNMPVAKEESVDDKWTRTTFEKSV
PMSTYLVCFAVHQFDSVKRISNSGKPLTIYVQPEQKHTAEYAANITKSVFDYFEEYFAMNYSLPKLDKIA
IPDFGTGAMENWGLITYRETNLLYDPKESASSNQQRVATVVAHEL VHQWFGNIVTMDWEDLWLNFGFAS
FFFEFLGVNHAETDWMRDQMLLEDVLPVQEDDSLMSHP IIVTVTPDEITSVFDGISYSKGSILRMLE
DWIKPENFQKGCQMYLEKYQFKNAKTSDFWAAL EASRLPVKEVMDTWTRQMGYPVLNVNGVKNIITQKRF
LLDPRANPSQPPSDLGYTWNIPVKWTE DNITSSVLFNRSEKEGITLNSSNPSGNAFLKINPDHIGFYRVN
YEVATWDSIATATSLNHKTFSSADRASLIDDAFALARAQLLDYKVALNLTKYLKREENFLPWQRVISA
YIISMFEDDKEL YPMIEEYFQGGVKPIADSLGWNDAGDHVTKLLRSSVLGFACKMGDREALNNASSLFEQ
WLNGTVSLPVNLRLLVYRYGMQNSGNEISWNYTLEQYQKTS LAQEKEKLLYGLASVKNVTL SRYLDLLK
DTNLIKTQDVFTVIRYISYNSYGKNMAWNWIQLNWDYL VNRYTLNRRNLGRIVTIAEPFNTLQLWQMES
FFAKYPQAGAGEKPREQVLETVKNNIEWLKQHRNTIREWFFNLLESG

TRTRPLEQKLI SEEDLAANDILDYKDDDDKV

| | |
|------------------|--|
| Tag: | C-Myc/DDK |
| Purity: | > 80% as determined by SDS-PAGE and Coomassie blue staining |
| Concentration: | >0.05 µg/µL as determined by microplate BCA method |
| Labeling Method: | Labeled with [U- ¹³ C ₆ , ¹⁵ N ₄]-L-Arginine and [U- ¹³ C ₆ , ¹⁵ N ₂]-L-Lysine |
| Buffer: | 25 mM Tris-HCl, 100 mM glycine, pH 7.3 |
| Storage: | Store at -80°C. Avoid repeated freeze-thaw cycles. |
| Stability: | Stable for 3 months from receipt of products under proper storage and handling conditions. |



[View online >](#)

RefSeq: [NP_001968](#)

RefSeq Size: 5004

RefSeq ORF: 2871

Synonyms: APA; CD249; gp160

Locus ID: 2028

UniProt ID: [Q07075](#)

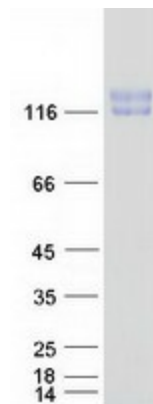
Cytogenetics: 4q25

Summary: The ENPEP gene encodes glutamyl aminopeptidase, a type II integral membrane protein with an extracellular zinc-binding domain. This protein can upregulate blood pressure by cleaving the N-terminal aspartate from angiotensin II, and can regulate blood vessel formation and enhance tumorigenesis in some tissues. Along with ANPEP and DPP4, ENPEP was found to be a candidate co-receptor for the coronavirus SARS-CoV-2, which causes COVID-19. [provided by RefSeq, Apr 2020]

Protein Families: Druggable Genome, ES Cell Differentiation/IPS, Protease, Transmembrane

Protein Pathways: Renin-angiotensin system

Product images:



Coomassie blue staining of purified ENPEP protein (Cat# [TP310521]). The protein was produced from HEK293T cells transfected with ENPEP cDNA clone (Cat# [RC210521]) using MegaTran 2.0 (Cat# [TT210002]).