

## Product datasheet for PH310516

### Jagged1 (JAG1) (NM\_000214) Human Mass Spec Standard

#### Product data:

Product Type:	Mass Spec Standards
Description:	JAG1 MS Standard C13 and N15-labeled recombinant protein (NP_000205)
Species:	Human
Expression Host:	HEK293
Expression cDNA Clone or AA Sequence:	RC210516
Predicted MW:	133.6 kDa
Protein Sequence:	>RC210516 representing NM_000214 Red=Cloning site Green=Tags(s)

MRSRPRTRGRSGRPLSLLLALLCALRAKVCASGQFELEILSMQNVNDELQNGNCCGARNPGDRKCTRDE  
CDTYFKVCLKEYQSRVTAGGPCSFSGSTPVIGGNTFNLKASRGNDRNRIVLPFSFAWPRSYYTLLVEAWD  
SSNDTVQPDSSIIEKASHSGMINPSRQWQTLKQNTGVAHFEYQIRVTCDDYYYGFGCNKFCRPRDDFFGHY  
ACDQNGNKTCEGWMGPECNRAICRQGCSPKHGSKLPGDCRCQYGWQGLYCDKCIHPHGCVHGICNEPW  
QCLCETNWGGQLCDKDLNYCGTHQPCLNGGTCSTNIDDCSPNNCSHGGTCQDLVNGFKCVCPPQWTGKTCQLDANECEAKP  
CKETSLGFCECECPGWTGPTCSTNIDDCSPNNCSHGGTCQDLVNGFKCVCPPQWTGKTCQLDANECEAKP  
CVNAKSCKNLIASYYCDCLPGWMGQNCIDININDCLGQCQNDASCRDLVNGYRCICPPGYAGDHCEERDIDE  
CASNPCLNGGHCQNEINRFQCLCPTGFSGNLCQLDIDYCEPNPCQNGAQCYNRASDYFCKCPEDYEGKNC  
SHLKDHCRTTPCEVIDSCTVAMASNDTPEGVRYISSNVCGPHGKCKSQSGGKFTCDCNKGFTGTYCHENI  
NDCESNPCRNGGTCIDGVNSYKICISDGEWEGAYCETNINDCSQNPCHNGGTCRDLVNDYFCCKNGWKGK  
TCHSRDSQCDEATCNNGGTCYDEGDAFKCMCPGGWEGTTCNIARNSSCLPNPCHNGGTCVNGESFTVCV  
KEGWEGPICAQNTNDCSPHPCYNSTGTCVDGDNWYRCECAPGFAGPDCRININECQSSPCAFGATCVDEIN  
GYRCVCPGHSKACQEVSGRPCITMGSVIRDGAKWDDCNTCQCLNGRIACSKVWCGPRPCLLHKGHSE  
CPSGQSCIPILDDQCFVHPCTGVGECRSSSLQPVKTKCTSDSYQDNCANITFTFNKEMMSPGLTTEHIC  
SELRNLNILKNVSAEYSIYIACEPSPSANNEIHVAISAEDIRDDGNPIKEITDKIIDLVSKRDGNSSLIA  
AVAEVRVQRRPLKNRTDFLVLSSVLTVAWICCLVAFYWCLRKRKPGSHTHSASEDNTNNVREQLN  
QIKNPIEKHGANTVPIKDYENKNSKMSKIRTHNSEVEEDMDKHQKARFAKQPAYTLVDREEKPPNGTL  
TKHPNWTNKQDNRDLESAQSLNRMEYIV

TRTRPLEQKLISEEDLAANDILDYKDDDDKV

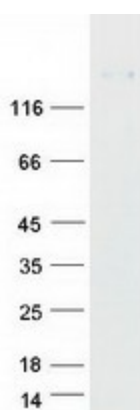
Tag:	C-Myc/DDK
Purity:	> 80% as determined by SDS-PAGE and Coomassie blue staining
Concentration:	>0.05 µg/µL as determined by microplate BCA method
Labeling Method:	Labeled with [U- <sup>13</sup> C <sub>6</sub> , <sup>15</sup> N <sub>4</sub> ]-L-Arginine and [U- <sup>13</sup> C <sub>6</sub> , <sup>15</sup> N <sub>2</sub> ]-L-Lysine



[View online »](#)

Buffer:	25 mM Tris-HCl, 100 mM glycine, pH 7.3
Storage:	Store at -80°C. Avoid repeated freeze-thaw cycles.
Stability:	Stable for 3 months from receipt of products under proper storage and handling conditions.
RefSeq:	<a href="#">NP_000205</a>
RefSeq Size:	5896
RefSeq ORF:	3654
Synonyms:	AGS; AGS1; AHD; AWS; CD339; DCHE; HJ1; JAGL1
Locus ID:	182
UniProt ID:	<a href="#">P78504</a> , <a href="#">Q99740</a>
Cytogenetics:	20p12.2
Summary:	The jagged 1 protein encoded by JAG1 is the human homolog of the Drosophila jagged protein. Human jagged 1 is the ligand for the receptor notch 1, the latter is involved in signaling processes. Mutations that alter the jagged 1 protein cause Alagille syndrome. Jagged 1 signalling through notch 1 has also been shown to play a role in hematopoiesis. [provided by RefSeq, Nov 2019]
Protein Families:	Druggable Genome, ES Cell Differentiation/IPS, Transmembrane
Protein Pathways:	Notch signaling pathway

### Product images:



Coomassie blue staining of purified JAG1 protein (Cat# [TP310516]). The protein was produced from HEK293T cells transfected with JAG1 cDNA clone (Cat# [RC210516]) using MegaTran 2.0 (Cat# [TT210002]).