

## Product datasheet for PH310510

### RAB21 (NM\_014999) Human Mass Spec Standard

#### Product data:

Product Type:	Mass Spec Standards
Description:	RAB21 MS Standard C13 and N15-labeled recombinant protein (NP_055814)
Species:	Human
Expression Host:	HEK293
Expression cDNA Clone or AA Sequence:	RC210510
Predicted MW:	24.3 kDa
Protein Sequence:	>RC210510 protein sequence Red=Cloning site Green=Tags(s)  MAAAGGGGGAAAAGRAYSFKVVLLGEGCVGKTSVLVRYCENKFNDKHITTLQASFLTCKLNIIGGKRVNL AIWDTAGQERFHALGPIYYRDSNGAILVYDITDEDSFQKVKNWVKELRKMLGNEICLCIVGNKIDLEKER HVSIQEAESYAESVGAHYHTSAKQNKGIEELFLDLCKRMIETAQVDERAKGNGSSQPGTARRGVQIIDD EPQAQTSGGGCCSSG  TRTRPLEQKLI SEEDLAANDILDYKDDDDKV
Tag:	C-Myc/DDK
Purity:	> 80% as determined by SDS-PAGE and Coomassie blue staining
Concentration:	>0.05 µg/µL as determined by microplate BCA method
Labeling Method:	Labeled with [U- <sup>13</sup> C <sub>6</sub> , <sup>15</sup> N <sub>4</sub> ]-L-Arginine and [U- <sup>13</sup> C <sub>6</sub> , <sup>15</sup> N <sub>2</sub> ]-L-Lysine
Buffer:	25 mM Tris-HCl, 100 mM glycine, pH 7.3
Storage:	Store at -80°C. Avoid repeated freeze-thaw cycles.
Stability:	Stable for 3 months from receipt of products under proper storage and handling conditions.
RefSeq:	<a href="#">NP_055814</a>
RefSeq Size:	2627
RefSeq ORF:	675
Locus ID:	23011
UniProt ID:	<a href="#">Q9UL25</a> , <a href="#">A0A024RBA9</a>
Cytogenetics:	12q21.1



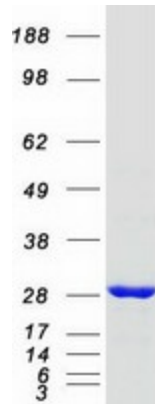
[View online »](#)

**Summary:**

This gene belongs to the Rab family of monomeric GTPases, which are involved in the control of cellular membrane traffic. The encoded protein plays a role in the targeted trafficking of integrins via its association with integrin alpha tails. As a consequence, the encoded protein is involved in the regulation of cell adhesion and migration. Expression of this gene is associated with a poor prognosis for glioma patients. This gene is downregulated by the tumor suppressor miR-200b, and miRNA-200b is itself downregulated in glioma tissues. [provided by RefSeq, Nov 2015]

**Protein Families:**

Druggable Genome

**Product images:**

Coomassie blue staining of purified RAB21 protein (Cat# [TP310510]). The protein was produced from HEK293T cells transfected with RAB21 cDNA clone (Cat# [RC210510]) using MegaTran 2.0 (Cat# [TT210002]).