

Product datasheet for PH310509

SAPS1 (PPP6R1) (NM_014931) Human Mass Spec Standard

Product data:

Product Type:	Mass Spec Standards
Description:	SAPS1 MS Standard C13 and N15-labeled recombinant protein (NP_055746)
Species:	Human
Expression Host:	HEK293
Expression cDNA Clone or AA Sequence:	RC210509
Predicted MW:	96.7 kDa
Protein Sequence:	>RC210509 protein sequence Red=Cloning site Green=Tags(s)

MFWKFDLHTSSHLDTLLEREDLSLPELLDEEDVLQECKVVRKLLDFLLQPPHLQAMVAWVTQEPPDSGE
ERLRYKYPSVACEILTSDVPQINDALGADESLLNRLYGFLQSTGSLNPLLASFFSKVMGILINRKTDLV
SFLRKKDDFVDLLLQHIGTSAIMDLLRLLTCVERPQLRQDVVNWLNEEKIVQRLIEQIHPKSDENQHSN
ASQSLCDIIRLSREQMIQVQDSPEPDQLLATLEKQETIEQLLSNMFEQEQSQSVIVSGIQVLLTLEPRR
PRSESVTVNSFFSSVDGQLELLAQGALESTVSSVGALHALRPRLSCFHQLLLLEPPKLEPLQMTWGLAPP
LGNTLHVVKLLASALSANDAALTHELLALDVPNTMLDLFFHYVFNFLHAQVEGCVSTMLSLGPPDSS
PETPIQNPVVKHLLQQCRLVERILTSWEENDRVQCAGGPRKGYMGHLTRVAGALVQNTKGPNAEQLRQL
LKELPSEQQEQWEAFVSGPLAETNKKMVDLVNTHHLHSSDDEDDRLKEFNFPPEAVLQQAFMDFQMQR
MTSAFIDHFGFNDEEFGQEESVNAPFDKTANITFSLNADDENPNANLLEICYKDRIQQFDDDEEEDEE
EAQSGGEDGEDGAWGSQLARGARLGQPPGVRSGGSTDSEDEEEDEEEDEEGICAAARGGATPLSY
PSPGPPGPGSWTATFDVPVTDAPTSRVS GEEELHTGPPAPQGPLSVPQGLPTQSLASPPARDALQLRS
QDPTPPSAPQEATEGSKVTEPSAPCQALVSIQDLQATFHGIRSA PSSSDSATRDPSTVSPASGAHQPPQT
TEGEKSPEPLGLPQSQAQALTPPPIPNGSAPEGPASPGSQ

TRTRPLEQKLI SEEDLAANDILDYKDDDDKV

Tag:	C-Myc/DDK
Purity:	> 80% as determined by SDS-PAGE and Coomassie blue staining
Concentration:	>0.05 µg/µL as determined by microplate BCA method
Labeling Method:	Labeled with [U- ¹³ C ₆ , ¹⁵ N ₄]-L-Arginine and [U- ¹³ C ₆ , ¹⁵ N ₂]-L-Lysine
Buffer:	25 mM Tris-HCl, 100 mM glycine, pH 7.3
Storage:	Store at -80°C. Avoid repeated freeze-thaw cycles.
Stability:	Stable for 3 months from receipt of products under proper storage and handling conditions.

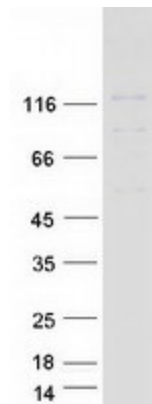


[View online >](#)

RefSeq:	NP_055746
RefSeq Size:	3654
RefSeq ORF:	2643
Synonyms:	KIAA1115; PP6R1; SAP190; SAPS1
Locus ID:	22870
UniProt ID:	Q9UPN7
Cytogenetics:	19q13.42

Summary: Protein phosphatase regulatory subunits, such as SAPS1, modulate the activity of protein phosphatase catalytic subunits by restricting substrate specificity, recruiting substrates, and determining the intracellular localization of the holoenzyme. SAPS1 is a regulatory subunit for the protein phosphatase-6 catalytic subunit (PPP6C; MIM 612725) (Stefansson and Brautigan, 2006 [PubMed 16769727]).[supplied by OMIM, Nov 2010]

Product images:



Coomassie blue staining of purified PPP6R1 protein (Cat# [TP310509]). The protein was produced from HEK293T cells transfected with PPP6R1 cDNA clone (Cat# [RC210509]) using MegaTran 2.0 (Cat# [TT210002]).