

Product datasheet for PH310499

VPS26B (NM_052875) Human Mass Spec Standard

Product data:

Product Type:	Mass Spec Standards
Description:	VPS26B MS Standard C13 and N15-labeled recombinant protein (NP_443107)
Species:	Human
Expression Host:	HEK293
Expression cDNA Clone or AA Sequence:	RC210499
Predicted MW:	39 kDa
Protein Sequence:	>RC210499 representing NM_052875 Red=Cloning site Green=Tags(s) MSFFGFGQSVEVEILLNDAESRKAHEKTEDGKKEKYFLFYDGETVSGKVSLLALRNPNKRLHEHQGIKIEF IGQIELYYDRGNHHEFVSLVKDLARPGEITQSQAQDFEFTHVEKPYESYTGQNVKLRFLRATISRRLND VVKEMDIVVHTLSTYPELNSSIKMEVGIEDCLHIEFEYNKSKYHLKDVIVGKIYFLLVRIKIKHMEIDII KRETTGTGPNVYHENDTIAKYEIMDGAPVRGESIPIRLFLAGYELTPTMRDINKKFSVRYLNLVLIDEE ERRYFKQQEVVLRKGDIVRKSMHQAAIASQRFEGTTSLSGEVRTPSQLSDNNCRQ TRTRPLEQKLISEEDLAANDILDYKDDDDKV
Tag:	C-Myc/DDK
Purity:	> 80% as determined by SDS-PAGE and Coomassie blue staining
Concentration:	>0.05 µg/µL as determined by microplate BCA method
Labeling Method:	Labeled with [U- ¹³ C ₆ , ¹⁵ N ₄]-L-Arginine and [U- ¹³ C ₆ , ¹⁵ N ₂]-L-Lysine
Buffer:	25 mM Tris-HCl, 100 mM glycine, pH 7.3
Storage:	Store at -80°C. Avoid repeated freeze-thaw cycles.
Stability:	Stable for 3 months from receipt of products under proper storage and handling conditions.
RefSeq:	NP_443107
RefSeq Size:	3685
RefSeq ORF:	1008
Synonyms:	Pep8b
Locus ID:	112936



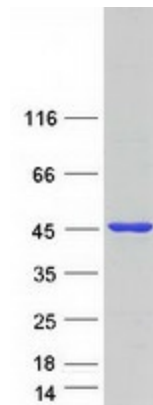
[View online »](#)

UniProt ID: [Q4G0F5](#), [A0A024R3L9](#)

Cytogenetics: 11q25

Summary: Acts as component of the retromer cargo-selective complex (CSC). The CSC is believed to be the core functional component of retromer or respective retromer complex variants acting to prevent missorting of selected transmembrane cargo proteins into the lysosomal degradation pathway. The recruitment of the CSC to the endosomal membrane involves RAB7A and SNX3. The SNX-BAR retromer mediates retrograde transport of cargo proteins from endosomes to the trans-Golgi network (TGN) and is involved in endosome-to-plasma membrane transport for cargo protein recycling. The SNX3-retromer mediates the retrograde transport of WLS distinct from the SNX-BAR retromer pathway. The SNX27-retromer is believed to be involved in endosome-to-plasma membrane trafficking and recycling of a broad spectrum of cargo proteins. The CSC seems to act as recruitment hub for other proteins, such as the WASH complex and TBC1D5. May be involved in retrograde transport of SORT1 but not of IGF2R. Acts redundantly with VSP26A in SNX-27 mediated endocytic recycling of SLC2A1/GLUT1 (By similarity).[UniProtKB/Swiss-Prot Function]

Product images:



Coomassie blue staining of purified VPS26B protein (Cat# [TP310499]). The protein was produced from HEK293T cells transfected with VPS26B cDNA clone (Cat# [RC210499]) using MegaTran 2.0 (Cat# [TT210002]).