

Product datasheet for PH310496

CGRP (CALCB) (NM_000728) Human Mass Spec Standard

Product data:

Product Type:	Mass Spec Standards
Description:	CALCB MS Standard C13 and N15-labeled recombinant protein (NP_000719)
Species:	Human
Expression Host:	HEK293
Expression cDNA Clone or AA Sequence:	RC210496
Predicted MW:	13.7 kDa
Protein Sequence:	>RC210496 protein sequence Red=Cloning site Green=Tags(s) MGFRKFS PFLALSILVLYQAGSLQAAPFRSALESSPDPATLSKEDARLLLAALVQDYVQMKASELKQEQE TQGSSSAAQKRACNTATCVTHRLAGLLSRSGGMVKS NFVPTNVGSKAFGRRRRDLQA TRTRPLEQKLISEEDLAANDILDYKDDDDKV
Tag:	C-Myc/DDK
Purity:	> 80% as determined by SDS-PAGE and Coomassie blue staining
Concentration:	>0.05 µg/µL as determined by microplate BCA method
Labeling Method:	Labeled with [U- 13C6, 15N4]-L-Arginine and [U- 13C6, 15N2]-L-Lysine
Buffer:	25 mM Tris-HCl, 100 mM glycine, pH 7.3
Storage:	Store at -80°C. Avoid repeated freeze-thaw cycles.
Stability:	Stable for 3 months from receipt of products under proper storage and handling conditions.
RefSeq:	<u>NP_000719</u>
RefSeq Size:	1031
RefSeq ORF:	381
Synonyms:	CALC2; CGRP-II; CGRP2
Locus ID:	797
UniProt ID:	<u>P10092</u>
Cytogenetics:	11p15.2

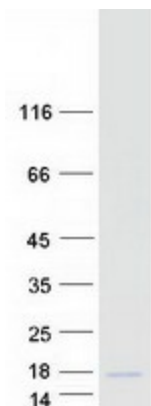


[View online »](#)

Summary: CGRP induces vasodilation. It dilates a variety of vessels including the coronary, cerebral and systemic vasculature. Its abundance in the CNS also points toward a neurotransmitter or neuromodulator role.[UniProtKB/Swiss-Prot Function]

Protein Families: Druggable Genome, Secreted Protein

Product images:



Coomassie blue staining of purified CALCB protein (Cat# [TP310496]). The protein was produced from HEK293T cells transfected with CALCB cDNA clone (Cat# [RC210496]) using MegaTran 2.0 (Cat# [TT210002]).