

Product datasheet for PH310489

Bcl 7A (BCL7A) (NM_001024808) Human Mass Spec Standard

Product data:

Product Type:	Mass Spec Standards
Description:	BCL7A MS Standard C13 and N15-labeled recombinant protein (NP_001019979)
Species:	Human
Expression Host:	HEK293
Expression cDNA Clone or AA Sequence:	RC210489
Predicted MW:	22.8 kDa
Protein Sequence:	>RC210489 protein sequence Red=Cloning site Green=Tags(s) MSGRSVRAETRSRAKDDIKRVMAAIEKVRKWEKKWVTVGDTSLRIYKWVPVTEPKVDDKNKKNKKGKDEK CGSEVTTPENSSSPGMMMDHDDNSNQSSIADASPIKQENSSNSSPAPEPNSAVPSDGTEAKVDEAQADGK EHPGAEDASDEQNSQSSMEHSMNSSEKVDQRQPSGDSGLAAETSAISQDLEGVPPSKMKMLEASQQNSEEM TRTRPLEQKLISEEDLAANDILDYKDDDDKV
Tag:	C-Myc/DDK
Purity:	> 80% as determined by SDS-PAGE and Coomassie blue staining
Concentration:	>0.05 µg/µL as determined by microplate BCA method
Labeling Method:	Labeled with [U- 13C6, 15N4]-L-Arginine and [U- 13C6, 15N2]-L-Lysine
Buffer:	25 mM Tris-HCl, 100 mM glycine, pH 7.3
Storage:	Store at -80°C. Avoid repeated freeze-thaw cycles.
Stability:	Stable for 3 months from receipt of products under proper storage and handling conditions.
RefSeq:	<u>NP_001019979</u>
RefSeq Size:	3651
RefSeq ORF:	630
Synonyms:	BCL7
Locus ID:	605
UniProt ID:	<u>Q4VC05</u>



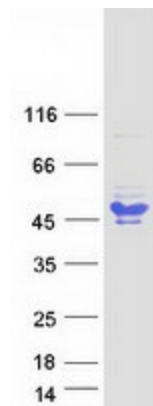
[View online »](#)

Cytogenetics: 12q24.31

Summary: This gene is directly involved, with Myc and IgH, in a three-way gene translocation in a Burkitt lymphoma cell line. As a result of the gene translocation, the N-terminal region of the gene product is disrupted, which is thought to be related to the pathogenesis of a subset of high-grade B cell non-Hodgkin lymphoma. The N-terminal segment involved in the translocation includes the region that shares a strong sequence similarity with those of BCL7B and BCL7C. Two transcript variants encoding different isoforms have been found for this gene. [provided by RefSeq, Jul 2008]

Protein Families: Druggable Genome

Product images:



Coomassie blue staining of purified BCL7A protein (Cat# [TP310489]). The protein was produced from HEK293T cells transfected with BCL7A cDNA clone (Cat# [RC210489]) using MegaTran 2.0 (Cat# [TT210002]).