

Product datasheet for PH310480

CAPZB (NM_004930) Human Mass Spec Standard

Product data:

Product Type:	Mass Spec Standards
Description:	CAPZB MS Standard C13 and N15-labeled recombinant protein (NP_004921)
Species:	Human
Expression Host:	HEK293
Expression cDNA Clone or AA Sequence:	RC210480
Predicted MW:	30.4 kDa
Protein Sequence:	>RC210480 representing NM_004930 Red=Cloning site Green=Tags(s) MSDQQLDCALDLMRRLPPQQIEKNLSIDLVPSLCEDLLSSVDQPLKIARDKVVGKDYLDCDYNRDGDS YRSPWSNKYDPPLEDGAMP SARLRKLEVEANAFDQYRDLYFEGGVSSVYLWDLDHGFAGVILIKKAGDG SKKIKGCWDSIHVVEVQEKSSGRTAHYKLTSTVMLWLQTNKSGSGTMNLGGSLTRQMEKDETVSDCSPHI ANIGRLVEDMENKIRSTLNEIYFGKTKDIVNGLRSVQTFADKSKQEALKNDLVEALKRKQQC TRTRPLEQKLI SEEDLAANDILDYKDDDDKV
Tag:	C-Myc/DDK
Purity:	> 80% as determined by SDS-PAGE and Coomassie blue staining
Concentration:	>0.05 µg/µL as determined by microplate BCA method
Labeling Method:	Labeled with [U- ¹³ C ₆ , ¹⁵ N ₄]-L-Arginine and [U- ¹³ C ₆ , ¹⁵ N ₂]-L-Lysine
Buffer:	25 mM Tris-HCl, 100 mM glycine, pH 7.3
Storage:	Store at -80°C. Avoid repeated freeze-thaw cycles.
Stability:	Stable for 3 months from receipt of products under proper storage and handling conditions.
RefSeq:	NP_004921
RefSeq Size:	1647
RefSeq ORF:	816
Synonyms:	CAPB; CAPPB; CAPZ
Locus ID:	832
UniProt ID:	P47756 , A0A384MR50 , Q7L4N0

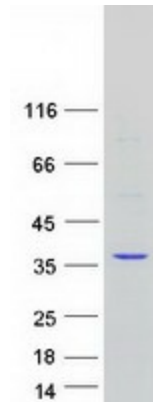


[View online »](#)

Cytogenetics: 1p36.13

Summary: This gene encodes the beta subunit of the barbed-end actin binding protein, which belongs to the F-actin capping protein family. The capping protein is a heterodimeric actin capping protein that blocks actin filament assembly and disassembly at the fast growing (barbed) filament ends and functions in regulating actin filament dynamics as well as in stabilizing actin filament lengths in muscle and nonmuscle cells. A pseudogene of this gene is located on the long arm of chromosome 2. Multiple alternatively spliced transcript variants encoding different isoforms have been found.[provided by RefSeq, Aug 2013]

Product images:



Coomassie blue staining of purified CAPZB protein (Cat# [TP310480]). The protein was produced from HEK293T cells transfected with CAPZB cDNA clone (Cat# [RC210480]) using MegaTran 2.0 (Cat# [TT210002]).