

## Product datasheet for PH310464

### GPS2 (NM\_004489) Human Mass Spec Standard

#### Product data:

Product Type:	Mass Spec Standards
Description:	GPS2 MS Standard C13 and N15-labeled recombinant protein (NP_004480)
Species:	Human
Expression Host:	HEK293
Expression cDNA Clone or AA Sequence:	RC210464
Predicted MW:	36.7 kDa
Protein Sequence:	>RC210464 protein sequence <span style="color: red;">Red</span> =Cloning site <span style="color: green;">Green</span> =Tags(s)

MPALLERPKLSNAMARALHRHIMMERERKRQEEEEVDKMEQKMKEEQERRKKKEMEERMSLEETKEQIL  
 KLEEKLLALQEEKHQLFLQLKKVLHEEEKRRRKEQSDLTTLTSAAYQQSLTVHTGTHLLSMQSPGGHNR  
 PGTLMADRAKQMFQPQLTTRHYVGSAAAFAGTPEHGQFQGSPGGAYGTAQPPPHYGPTQPAYSPSQQL  
 RAPSAFPAYQLSQPQPYPYAVHGHFQPTQTGFLQPGGALSLQKQMEHANQQTGFSDSSSLRPMHPQALH  
 PAPGLLASPQLPVQMPPAGKSGFAATSQPGPRLPFIQHSQNPRFYHK

TRTRPLEQKLISEEDLAANDILDYKDDDDKV

Tag:	C-Myc/DDK
Purity:	> 80% as determined by SDS-PAGE and Coomassie blue staining
Concentration:	>0.05 µg/µL as determined by microplate BCA method
Labeling Method:	Labeled with [U- <sup>13</sup> C <sub>6</sub> , <sup>15</sup> N <sub>4</sub> ]-L-Arginine and [U- <sup>13</sup> C <sub>6</sub> , <sup>15</sup> N <sub>2</sub> ]-L-Lysine
Buffer:	25 mM Tris-HCl, 100 mM glycine, pH 7.3
Storage:	Store at -80°C. Avoid repeated freeze-thaw cycles.
Stability:	Stable for 3 months from receipt of products under proper storage and handling conditions.
RefSeq:	<u>NP_004480</u>
RefSeq Size:	1181
RefSeq ORF:	981
Synonyms:	AMF-1
Locus ID:	2874


[View online »](#)

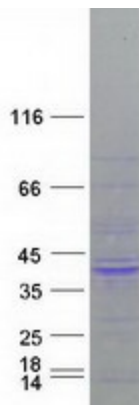
UniProt ID: [Q13227](#)

Cytogenetics: 17p13.1

**Summary:** This gene encodes a protein involved in G protein-mitogen-activated protein kinase (MAPK) signaling cascades. When overexpressed in mammalian cells, this gene could potentially suppress a RAS- and MAPK-mediated signal and interfere with JNK activity, suggesting that the function of this gene may be signal repression. The encoded protein is an integral subunit of the NCOR1-HDAC3 (nuclear receptor corepressor 1-histone deacetylase 3) complex, and it was shown that the complex inhibits JNK activation through this subunit and thus could potentially provide an alternative mechanism for hormone-mediated antagonism of AP1 (activator protein 1) function. [provided by RefSeq, Jul 2008]

Protein Families: Druggable Genome

### Product images:



Coomassie blue staining of purified GPS2 protein (Cat# [TP310464]). The protein was produced from HEK293T cells transfected with GPS2 cDNA clone (Cat# [RC210464]) using MegaTran 2.0 (Cat# [TT210002]).