

## Product datasheet for PH310458

### Nucleophosmin (NPM1) (NM\_001037738) Human Mass Spec Standard

#### Product data:

Product Type:	Mass Spec Standards
Description:	NPM1 MS Standard C13 and N15-labeled recombinant protein (NP_001032827)
Species:	Human
Expression Host:	HEK293
Expression cDNA Clone or AA Sequence:	RC210458
Predicted MW:	28.4 kDa
Protein Sequence:	>RC210458 protein sequence Red=Cloning site Green=Tags(s)  MEDSMDMDMSPLRPQNYLFGCELKADKDYHFKVDNDENEHQLSLRTVSLGAGAKDELHIVEAEAMNYEGS PIKVTLATLKMSVQPTVSLGGFEITPPVVLRLKCGSGPVHISGQHLVAVEEDAEESEDEEEDVKLLSISG KRSAPGGGSKVPQKKVKLAADEDDEDDDEDDDDDFDDEEAEEKAPVKKSIRDTPAKNAQKSNQN GKDSKPSSTPRSKGQESFKKQEKTPKTPKGPSSVEDIKAKMQASIEKAH  TRTRPLEQKLISEEDLAANDILDYKDDDDKV
Tag:	C-Myc/DDK
Purity:	> 80% as determined by SDS-PAGE and Coomassie blue staining
Concentration:	>0.05 µg/µL as determined by microplate BCA method
Labeling Method:	Labeled with [U- <sup>13</sup> C <sub>6</sub> , <sup>15</sup> N <sub>4</sub> ]-L-Arginine and [U- <sup>13</sup> C <sub>6</sub> , <sup>15</sup> N <sub>2</sub> ]-L-Lysine
Buffer:	25 mM Tris-HCl, 100 mM glycine, pH 7.3
Storage:	Store at -80°C. Avoid repeated freeze-thaw cycles.
Stability:	Stable for 3 months from receipt of products under proper storage and handling conditions.
RefSeq:	<a href="#">NP_001032827</a>
RefSeq Size:	1347
RefSeq ORF:	777
Synonyms:	B23; NPM
Locus ID:	4869
UniProt ID:	<a href="#">P06748</a> , <a href="#">A0A140VJQ2</a>



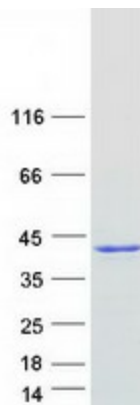
[View online »](#)

**Cytogenetics:** 5q35.1

**Summary:** The protein encoded by this gene is involved in several cellular processes, including centrosome duplication, protein chaperoning, and cell proliferation. The encoded phosphoprotein shuttles between the nucleolus, nucleus, and cytoplasm, chaperoning ribosomal proteins and core histones from the nucleus to the cytoplasm. This protein is also known to sequester the tumor suppressor ARF in the nucleolus, protecting it from degradation until it is needed. Mutations in this gene are associated with acute myeloid leukemia. Dozens of pseudogenes of this gene have been identified. [provided by RefSeq, Aug 2017]

**Protein Families:** Druggable Genome, Stem cell - Pluripotency, Transcription Factors

**Product images:**



Coomassie blue staining of purified NPM1 protein (Cat# [TP310458]). The protein was produced from HEK293T cells transfected with NPM1 cDNA clone (Cat# [RC210458]) using MegaTran 2.0 (Cat# [TT210002]).