

## Product datasheet for PH310449

### MRPL39 (NM\_017446) Human Mass Spec Standard

#### Product data:

Product Type:	Mass Spec Standards
Description:	MRPL39 MS Standard C13 and N15-labeled recombinant protein (NP_059142)
Species:	Human
Expression Host:	HEK293
Expression cDNA Clone or AA Sequence:	RC210449
Predicted MW:	38.7 kDa
Protein Sequence:	>RC210449 protein sequence Red=Cloning site Green=Tags(s)

MEALAMGSRALRLWL VAPGGGIKWRFIATSPASQLSPTELTEMRNDFNKEKARQLSLTPRTEKIEVKHV  
GKTDPGTVFVMNKNISTPYSCAMHLSEWYCRKSILALVDGQPDWYKPLTKSCEIKFLTFKDCDPGEVKN  
AYWRSCAMMGCVIERAFKDEYVMNLVRAPEVPVISGAFCYDVLDSKLDWMPKTENLRSTKDAHALI  
YKDLPFETLEVEAKVALEIFQHSKYKVDFIEEKASQNERIVKLHRIGDFIDVSEGPLIPRTSICFQYEV  
SAVHNLQPTQPSLIRRFQGVSLPVHLRAHFTIWDKLLERSRKMVEDQSKATEECTST

TRTRPLEQKLISEEDLAANDILDYKDDDDKV

Tag:	C-Myc/DDK
Purity:	> 80% as determined by SDS-PAGE and Coomassie blue staining
Concentration:	>0.05 µg/µL as determined by microplate BCA method
Labeling Method:	Labeled with [U- <sup>13</sup> C <sub>6</sub> , <sup>15</sup> N <sub>4</sub> ]-L-Arginine and [U- <sup>13</sup> C <sub>6</sub> , <sup>15</sup> N <sub>2</sub> ]-L-Lysine
Buffer:	25 mM Tris-HCl, 100 mM glycine, pH 7.3
Storage:	Store at -80°C. Avoid repeated freeze-thaw cycles.
Stability:	Stable for 3 months from receipt of products under proper storage and handling conditions.
RefSeq:	<u><a href="#">NP_059142</a></u>
RefSeq Size:	1082
RefSeq ORF:	1014
Synonyms:	C21orf92; L5mt; L39mt; MRP-L5; MRPL5; MSTP003; PRED22; PRED66; RPML5
Locus ID:	54148



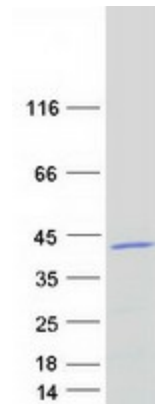
[View online »](#)

UniProt ID: [Q9NYK5](#)

Cytogenetics: 21q21.3

**Summary:** Mammalian mitochondrial ribosomal proteins are encoded by nuclear genes and help in protein synthesis within the mitochondrion. Mitochondrial ribosomes (mitoribosomes) consist of a small 28S subunit and a large 39S subunit. They have an estimated 75% protein to rRNA composition compared to prokaryotic ribosomes, where this ratio is reversed. Another difference between mammalian mitoribosomes and prokaryotic ribosomes is that the latter contain a 5S rRNA. Among different species, the proteins comprising the mitoribosome differ greatly in sequence, and sometimes in biochemical properties, which prevents easy recognition by sequence homology. This gene encodes a 39S subunit protein. Two transcript variants encoding distinct isoforms have been described. A pseudogene corresponding to this gene is found on chromosome 5q. [provided by RefSeq, Jul 2008]

### Product images:



Coomassie blue staining of purified MRPL39 protein (Cat# [TP310449]). The protein was produced from HEK293T cells transfected with MRPL39 cDNA clone (Cat# [RC210449]) using MegaTran 2.0 (Cat# [TT210002]).