

Product datasheet for PH310437

CD226 (NM_006566) Human Mass Spec Standard

Product data:

Product Type:	Mass Spec Standards
Description:	CD226 MS Standard C13 and N15-labeled recombinant protein (NP_006557)
Species:	Human
Expression Host:	HEK293
Expression cDNA Clone or AA Sequence:	RC210437
Predicted MW:	38.6 kDa
Protein Sequence:	>RC210437 protein sequence Red=Cloning site Green=Tags(s)

MDYPTLLALLHVRALCEEVLWHTSVPFENMSLECVYPSMGILTQVEWFKIGTQQDSIAIFSPTHGMV
IRKPYAERVYFLNSTMASNNMTLFFRNASEDDVGYSCSLYTPQGTWQKVIQVVQSDSFEEAVPSNSHI
VSEPGKNVTLTCQPQMTWPVQAVRWEKIQRQIDLLTYCNLVHGRNFTSKFPRQIVSNCSHGRWSVIVIP
DVTVSDSGLYRCYLQASAGENETFMRLTVAEGKTDNQYTLFVAGGTVLLLLFVISITTIIVIFLNRERR
RERRDLFTESWDTQKAPNNYRSPISTGQPTNQSMDDTREDIYVNYPTFSRRPKTRV

TRTRPLEQKLISEEDLAANDILDYKDDDDKV

Tag:	C-Myc/DDK
Purity:	> 80% as determined by SDS-PAGE and Coomassie blue staining
Concentration:	>0.05 µg/µL as determined by microplate BCA method
Labeling Method:	Labeled with [U- ¹³ C ₆ , ¹⁵ N ₄]-L-Arginine and [U- ¹³ C ₆ , ¹⁵ N ₂]-L-Lysine
Buffer:	25 mM Tris-HCl, 100 mM glycine, pH 7.3
Storage:	Store at -80°C. Avoid repeated freeze-thaw cycles.
Stability:	Stable for 3 months from receipt of products under proper storage and handling conditions.
RefSeq:	<u>NP_006557</u>
RefSeq Size:	2664
RefSeq ORF:	1008
Synonyms:	DNAM-1; DNAM1; PTA1; TLISA1
Locus ID:	10666



[View online »](#)

UniProt ID: [Q15762](#)

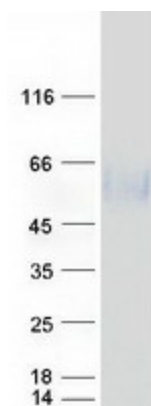
Cytogenetics: 18q22.2

Summary: This gene encodes a glycoprotein expressed on the surface of NK cells, platelets, monocytes and a subset of T cells. It is a member of the Ig-superfamily containing 2 Ig-like domains of the V-set. The protein mediates cellular adhesion of platelets and megakaryocytic cells to vascular endothelial cells. The protein also plays a role in megakaryocytic cell maturation. Alternative splicing results in multiple transcript variants. [provided by RefSeq, Jan 2015]

Protein Families: Druggable Genome, Transmembrane

Protein Pathways: Cell adhesion molecules (CAMs)

Product images:



Coomassie blue staining of purified CD226 protein (Cat# [TP310437]). The protein was produced from HEK293T cells transfected with CD226 cDNA clone (Cat# [RC210437]) using MegaTran 2.0 (Cat# [TT210002]).