

## Product datasheet for PH310386

### gamma C Crystallin (CRYGC) (NM\_020989) Human Mass Spec Standard

#### Product data:

Product Type:	Mass Spec Standards
Description:	CRYGC MS Standard C13 and N15-labeled recombinant protein (NP_066269)
Species:	Human
Expression Host:	HEK293
Expression cDNA Clone or AA Sequence:	RC210386
Predicted MW:	20.9 kDa
Protein Sequence:	>RC210386 protein sequence <b>Red</b> =Cloning site <b>Green</b> =Tags(s)  MGKITFYEDRAFQGRSYETTTDCPNLQPYFSRCNSIRVESGCWMLYERPNYQGQQYLLRRGEYPDYQQWM GLSDSIRSCCLIPQTVSHRLRLYEREDHKGLMMELSEDCPSIQDRFHLSEIRSLHVLEGCWLYELPNYR GRQYLLRPQEYRRCQDWGAMDAKAGSLRRVVDLY  <b>TRTRPLEQKLI SEEDLAANDILDYKDDDDKV</b>
Tag:	C-Myc/DDK
Purity:	> 80% as determined by SDS-PAGE and Coomassie blue staining
Concentration:	>0.05 µg/µL as determined by microplate BCA method
Labeling Method:	Labeled with [U- 13C6, 15N4]-L-Arginine and [U- 13C6, 15N2]-L-Lysine
Buffer:	25 mM Tris-HCl, 100 mM glycine, pH 7.3
Storage:	Store at -80°C. Avoid repeated freeze-thaw cycles.
Stability:	Stable for 3 months from receipt of products under proper storage and handling conditions.
RefSeq:	<a href="#">NP_066269</a>
RefSeq Size:	645
RefSeq ORF:	522
Synonyms:	CCL; CRYG3; CTRCT2
Locus ID:	1420
UniProt ID:	<a href="#">P07315</a> , <a href="#">A0A0X8GLL6</a>



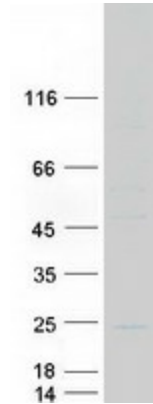
[View online »](#)

**Cytogenetics:** 2q33.3

**Summary:** This gene encodes a member of the beta/gamma-crystallin family of proteins. Crystallins constitute the major proteins of vertebrate eye lens and maintain the transparency and refractive index of the lens. This gene and several family members are present in a gene cluster on chromosome 2. Mutations in this gene have been shown to cause multiple types of cataract, including Coppock-like cataract and zonular pulverulent cataract, among others. [provided by RefSeq, Jan 2015]

**Protein Families:** Druggable Genome

### Product images:



Coomassie blue staining of purified CRYGC protein (Cat# [TP310386]). The protein was produced from HEK293T cells transfected with CRYGC cDNA clone (Cat# [RC210386]) using MegaTran 2.0 (Cat# [TT210002]).