

Product datasheet for PH310384

Opticin (OPTC) (NM_014359) Human Mass Spec Standard

Product data:

Product Type:	Mass Spec Standards
Description:	OPTC MS Standard C13 and N15-labeled recombinant protein (NP_055174)
Species:	Human
Expression Host:	HEK293
Expression cDNA Clone or AA Sequence:	RC210384
Predicted MW:	37.3 kDa
Protein Sequence:	>RC210384 protein sequence Red=Cloning site Green=Tags(s)

MRLLAFLSLLALVLQETGTASLPRKERKRREEQMPREGDSFEVLPLRNDVLNPDNYGEVIDLSNYEELTD
YGDQLPEVKVTS LAPATSI SPAKSTTAPGTPSSNPTMTRPTTAGLLLSSQPNHGLPTCLVCVCLGSSVYC
DDIDLEDIPPLPRRTAYLYARFNRSRIRAEDFKGLTKLKRIDLNNLSSIDNDAFRLLHALQDLILPE
NQLEALPVLPSGIEFLDVRLNRLQSSGIQPAAFRAMEKLQFLYLSDNLLDSIPGPLPLSLRSVHLQNNLI
ETMQRDVFCDPPEEHKHTRRQLEDIRLDGNPINLSLFPSAYFCLPRLPIGRFT

TRTRPLEQKLISEEDLAANDILDYKDDDDKV

Tag:	C-Myc/DDK
Purity:	> 80% as determined by SDS-PAGE and Coomassie blue staining
Concentration:	>0.05 µg/µL as determined by microplate BCA method
Labeling Method:	Labeled with [U- ¹³ C ₆ , ¹⁵ N ₄]-L-Arginine and [U- ¹³ C ₆ , ¹⁵ N ₂]-L-Lysine
Buffer:	25 mM Tris-HCl, 100 mM glycine, pH 7.3
Storage:	Store at -80°C. Avoid repeated freeze-thaw cycles.
Stability:	Stable for 3 months from receipt of products under proper storage and handling conditions.
RefSeq:	<u>NP_055174</u>
RefSeq Size:	1444
RefSeq ORF:	996
Synonyms:	OPT
Locus ID:	26254



[View online »](#)

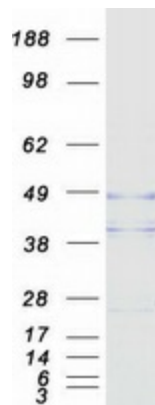
UniProt ID: [Q9UBM4](#)

Cytogenetics: 1q32.1

Summary: Opticin belongs to class III of the small leucine-rich repeat protein (SLRP) family. Members of this family are typically associated with the extracellular matrix. Opticin is present in significant quantities in the vitreous of the eye and also localizes to the cornea, iris, ciliary body, optic nerve, choroid, retina, and fetal liver. Opticin may noncovalently bind collagen fibrils and regulate fibril morphology, spacing, and organization. The opticin gene is mapped to a region of chromosome 1 that is associated with the inherited eye diseases age-related macular degeneration (AMD) and posterior column ataxia with retinosa pigmentosa (AXPC1). [provided by RefSeq, Jul 2008]

Protein Families: Secreted Protein

Product images:



Coomassie blue staining of purified OPTC protein (Cat# [TP310384]). The protein was produced from HEK293T cells transfected with OPTC cDNA clone (Cat# [RC210384]) using MegaTran 2.0 (Cat# [TT210002]).