

Product datasheet for PH310368

Myostatin Propeptide (MSTN) (NM_005259) Human Mass Spec Standard

Product data:

Product Type:	Mass Spec Standards
Description:	MSTN MS Standard C13 and N15-labeled recombinant protein (NP_005250)
Species:	Human
Expression Host:	HEK293
Expression cDNA Clone or AA Sequence:	RC210368
Predicted MW:	42.8 kDa
Protein Sequence:	>RC210368 protein sequence Red=Cloning site Green=Tags(s)
	<p>MQKLQLCVYIYLFMLIVAGPVDLNENSEQKENVEKEGLCNACTWRQNTKSSRIEAIKIQLSKLRLETAP NISKDVIRQLLPKAPPLRELIDQYDVQRDSSDGSLEDDDYHATTETIITMPTESDFLMQVDGKPKCCFF KFSSKIQYNKVVKAQLWIYLRPVETPTTVFVQILRLIKPMKDGTRYTGIRSLKLDMPGTGIWQSIDVKT VLQNWLKQPESNLGIEIKALDENGHDLAFTFPGPGEDGLNPFLEVKVTDTPKRSRRDFGLDCDEHSTESR CCRYPLTVDFEAFGWDWIIAPKRYKANYCSGECEVFVLQKYPHTLHVQANPRGSAGPCCTPTKMSPINM LYFNGKEQIIYGKIPAMVVDRCGCS</p> <p>TRTRPLEQKLISEEDLAANDILDYKDDDDKV</p>
Tag:	C-Myc/DDK
Purity:	> 80% as determined by SDS-PAGE and Coomassie blue staining
Concentration:	>0.05 µg/µL as determined by microplate BCA method
Labeling Method:	Labeled with [U- ¹³ C ₆ , ¹⁵ N ₄]-L-Arginine and [U- ¹³ C ₆ , ¹⁵ N ₂]-L-Lysine
Buffer:	25 mM Tris-HCl, 100 mM glycine, pH 7.3
Storage:	Store at -80°C. Avoid repeated freeze-thaw cycles.
Stability:	Stable for 3 months from receipt of products under proper storage and handling conditions.
RefSeq:	<u>NP_005250</u>
RefSeq Size:	2823
RefSeq ORF:	1125
Synonyms:	GDF8; MSLHP
Locus ID:	2660



[View online »](#)

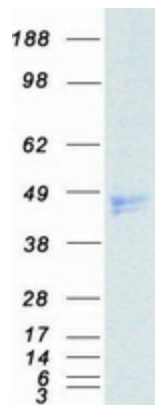
UniProt ID: [O14793](#), [Q53S46](#)

Cytogenetics: 2q32.2

Summary: This gene encodes a secreted ligand of the TGF-beta (transforming growth factor-beta) superfamily of proteins. Ligands of this family bind various TGF-beta receptors leading to recruitment and activation of SMAD family transcription factors that regulate gene expression. The encoded preproprotein is proteolytically processed to generate each subunit of the disulfide-linked homodimer. This protein negatively regulates skeletal muscle cell proliferation and differentiation. Mutations in this gene are associated with increased skeletal muscle mass in humans and other mammals. [provided by RefSeq, Jul 2016]

Protein Families: Druggable Genome, Secreted Protein

Product images:



Coomassie blue staining of purified MSTN protein (Cat# [TP310368]). The protein was produced from HEK293T cells transfected with MSTN cDNA clone (Cat# [RC210368]) using MegaTran 2.0 (Cat# [TT210002]).