

## Product datasheet for PH310329

### ISLR (NM\_005545) Human Mass Spec Standard

#### Product data:

Product Type:	Mass Spec Standards
Description:	ISLR MS Standard C13 and N15-labeled recombinant protein (NP_005536)
Species:	Human
Expression Host:	HEK293
Expression cDNA Clone or AA Sequence:	RC210329
Predicted MW:	46 kDa
Protein Sequence:	>RC210329 protein sequence Red=Cloning site Green=Tags(s)
	<p>MQELHLLWWALLLGLAQACPEPCDCGEKYGFQIADCAYRDLESVPPGFANVTTLSSLNRLPGLPEGAF  REVPLLQSLWLAHNEIRTVAAGALASLSHLKSLDLSHNLSDFAWSDLHNL SALQLLKMDSNELTFIPRD  AFRSLRALRSLQLNHNRLHTLAEGTFTPLTALSHLQINENPFDCTCGIVWLKTWALTTAVSIPEQDNIAC  TSPHVLKGTPLSRLPPLPCSAPSVQLSYQPSQDGAELRPGFVLALHCDVDGQPAPQLHWHIQIPSGIVEI  TSPNVGTDGRALPGTPVASSQPRFQAFANGSLLIPDFGKLEEGTYSCLATNELGSAESSVDVALATPGE  GEDTLGRRFHGKAVEGKGCYTVDNEVQPSGPEDNVVIYLSRAGNPEAAVAEGVPGQLPPGLLLLGSLL  LFFFLTSTF</p> <p>TRTRPLEQKLISEEDLAANDILDYKDDDDKV</p>
Tag:	C-Myc/DDK
Purity:	> 80% as determined by SDS-PAGE and Coomassie blue staining
Concentration:	>0.05 µg/µL as determined by microplate BCA method
Labeling Method:	Labeled with [U- <sup>13</sup> C <sub>6</sub> , <sup>15</sup> N <sub>4</sub> ]-L-Arginine and [U- <sup>13</sup> C <sub>6</sub> , <sup>15</sup> N <sub>2</sub> ]-L-Lysine
Buffer:	25 mM Tris-HCl, 100 mM glycine, pH 7.3
Storage:	Store at -80°C. Avoid repeated freeze-thaw cycles.
Stability:	Stable for 3 months from receipt of products under proper storage and handling conditions.
RefSeq:	<u><a href="#">NP_005536</a></u>
RefSeq Size:	2312
RefSeq ORF:	1284
Synonyms:	HsT17563; Meflin



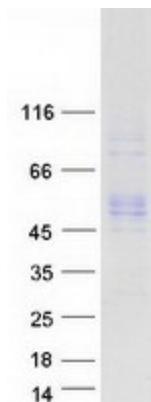
[View online »](#)

Locus ID: 3671

UniProt ID: [O14498](#), [A0A146E5L3](#)

Cytogenetics: 15q24.1

### Product images:



Coomassie blue staining of purified ISLR protein (Cat# [TP310329]). The protein was produced from HEK293T cells transfected with ISLR cDNA clone (Cat# [RC210329]) using MegaTran 2.0 (Cat# [TT210002]).