

Product datasheet for PH310322

Reticulon 1 (RTN1) (NM_021136) Human Mass Spec Standard

Product data:

Product Type:	Mass Spec Standards
Description:	RTN1 MS Standard C13 and N15-labeled recombinant protein (NP_066959)
Species:	Human
Expression Host:	HEK293
Expression cDNA Clone or AA Sequence:	RC210322
Predicted MW:	83.4 kDa
Protein Sequence:	>RC210322 representing NM_021136 Red=Cloning site Green=Tags(s)
	<p>MAAPGDPQDELLPLAGPGSQWLRHRGEGENEAVTPKGATPAPQAGEPSPGLGARAREAASREAGSGPARQ SPVAMETASTGVAGVSSAMDHTFSTTSKDGEGSCYTSLISDICYPPQEDSTYFTGILQKENGHVITISEP EELGTPGPSLPDVPGIESRGLFSSDSGIEMTPAESTEVNKILADPLDQMKAAYKYIDITRPEEVKHQEQ HHEPELDKDLDFKNKDDTISIKPEGVREPKPAPVEGKI IKDHLLLEESTFAPYIDDLSEEQRRAPIITP VKITL TEI E P S V E T T T Q E K T P E K Q D I C L K P S P D T V P T V T V S E P E D D S P G S I T P P S S G T E P S A A E S Q G K G S I S E D E L I T A I K E A K G L S Y E T A E N P R P V G Q L A D R P E V K A R S G P P T I P S P L D H E A S S A E S G D S E I E L V S E D P M A A E D A L P S G Y V S F G H V G P P P S P A S P S I Q Y S I L R E E R E A E L D S E L I I E S C D A S S A S E E S P K R E Q D S P P M K P S A L D A I R E E T G V R A E E R A P S R R G L A E P G S F L D Y P S T E P Q P G P E L P P G D G A L E P E T P M L P R K P E E D S S S N Q S P A A T K G P G P L G P G A P P P L L F L N K Q K A I D L L Y W R D I K Q T G I V F G S F L L L L F S L T Q F S V V S V V A Y L A L A A L S A T I S F R I Y K S V L Q A V Q K T D E G H P F K A Y L E I T L S Q E Q I Q K Y T D C L Q F Y V N S T L K E L R R L F L V Q D L V D S L K F A V L M W L L T Y V G A L F N G L T L L L M A V V S M F T L P V V Y V K H Q A Q I D Q Y L G L V R T H I N A V V A K I Q A K I P G A K R H A E</p> <p>TRTRPLEQKLI SEEDLAANDILDYKDDDDKV</p>
Tag:	C-Myc/DDK
Purity:	> 80% as determined by SDS-PAGE and Coomassie blue staining
Concentration:	>0.05 µg/µL as determined by microplate BCA method
Labeling Method:	Labeled with [U- ¹³ C ₆ , ¹⁵ N ₄]-L-Arginine and [U- ¹³ C ₆ , ¹⁵ N ₂]-L-Lysine
Buffer:	25 mM Tris-HCl, 100 mM glycine, pH 7.3
Storage:	Store at -80°C. Avoid repeated freeze-thaw cycles.
Stability:	Stable for 3 months from receipt of products under proper storage and handling conditions.
RefSeq:	NP_066959



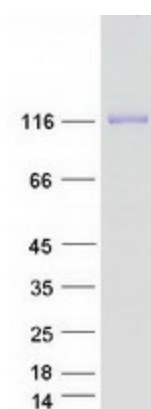
[View online »](#)

RefSeq Size: 3327
RefSeq ORF: 2328
Synonyms: NSP
Locus ID: 6252
UniProt ID: [Q16799](#)
Cytogenetics: 14q23.1

Summary: This gene belongs to the family of reticulon encoding genes. Reticulons are associated with the endoplasmic reticulum, and are involved in neuroendocrine secretion or in membrane trafficking in neuroendocrine cells. This gene is considered to be a specific marker for neurological diseases and cancer, and is a potential molecular target for therapy. Alternative splicing results in multiple transcript variants. [provided by RefSeq, Jul 2011]

Protein Families: Transmembrane

Product images:



Coomassie blue staining of purified RTN1 protein (Cat# [TP310322]). The protein was produced from HEK293T cells transfected with RTN1 cDNA clone (Cat# [RC210322]) using MegaTran 2.0 (Cat# [TT210002]).